



Condensate removal timer

P992087

PRESENTATION:

The condensate removal timer is a plug-on controller specially design for drain valves. The unit offers an easy time cycle programming. The draining time can be set via the "ON" trimmer between 0.5 and 10 seconds. The "OFF" trimmer allows to adjust the delay time between two draining cycles from 0.5 to 45 minutes. The unit is ready to control the valve as soon as the power is switched on. The ON/OFF sequence will be repeated so long as the unit is fed. Two LED's indicate the output status. A "TEST" button is provided to check the cycle settings and to restart the control sequence from the output status "ON".

USE:

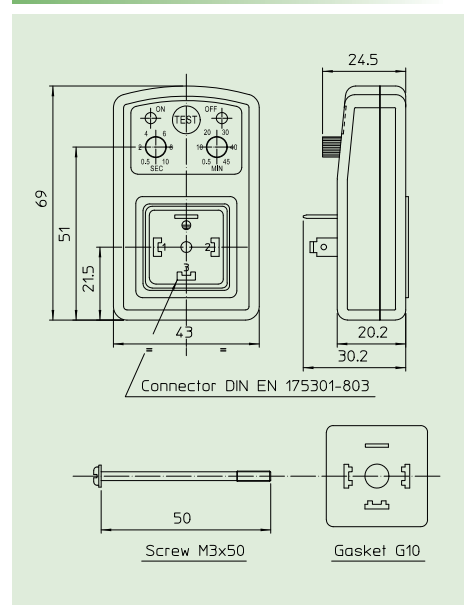
Condensate drainage system
Timed systems.



TECHNICAL DETAILED:

Supply voltage: 24 to 240V AC/DC \pm 10% 50/60Hz
Output voltage: same as supply voltage
Load current: max. 1A
Standby current: 8mA max
Operating temp. range: - 40°C to + 60°C
Connector: EN 175301-803 / ISO 4400
Environmental protection: IP65 (assembled with delivered gaskets)
Housing dimensions: 69 x 43 x 21mm
On time: 0.5 to 10 seconds
Off time: 0.5 to 45 minutes
Scale accuracy: \pm 10%
Indicators: Green LED – On phase;
Red LED – Off phase.

DIMENSIONS:



MATERIALS:

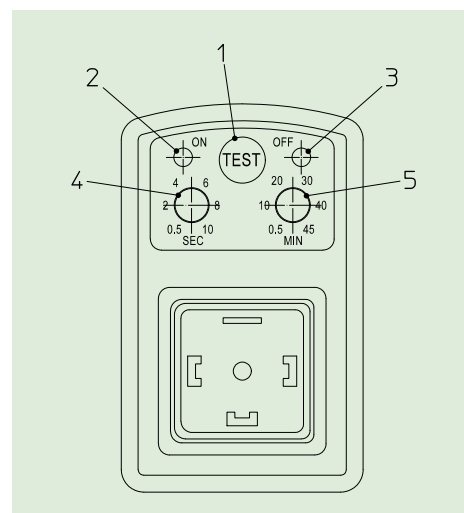
Shell: ABS-PA 765
Gasket: NBR(nitrile)

ACCESSORIES:

Connectors for EV (to be order separately)
Pg 9 (6 \pm 8mm) or Pg 11(8 \pm 10mm)

DESCRIPTION:

- | | |
|--|-----------------------|
| 1. Push-button TEST | |
| 2. Green Led not supplied : output power | present (ON) |
| 3. Red Led load supplied : output power | absent (OFF) |
| 4. Trimmer "ON": regulation | time "ON" |
| 5. Trimmer "OFF": pause | time regulation "OFF" |



Notes

In the near future available also with UL approval.
In accordance with RoHS.

The "ODE" reserves the right to carry out technical and aesthetic modifications without prior notification.