

Angular grippers Series CGA

1

Magnetic

Sizes 10, 16, 20, 25, 32



- » Compact design
- » Flexible mounting
- » Optional mounting adaptors

For an easier installation the gripper can also be equipped with an optional installation adaptor mod. C-CGP (female) or L-CGP (male).

The angular grippers Series CGA, available in 5 different sizes, open and close at angles between -10° and $+30^\circ$. The proximity switches can be inserted in the U-shaped grooves on the body.

Grippers Series CGA have mounting holes on three sides which provide flexibility in installation.

GENERAL DATA

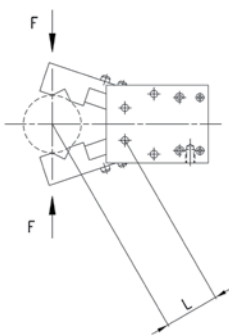
| | | | | | |
|--|---|------------------------|------------------------|------------------------|------------------------|
| Model | CGA-10; CGA-16; CGA-20; CGA-25; CGA-32 | | | | |
| Bore sizes | \varnothing 10; \varnothing 16; \varnothing 20; \varnothing 25; \varnothing 32 | | | | |
| Type of operation | double-acting | | | | |
| Operating pressure | 1.5 ÷ 7 bar | | | | |
| Operating temperature | 0 ÷ 80°C | | | | |
| Max. operating frequency | 180 cycles/min | | | | |
| Lubrication | lever section - lubrication required on sliding section | | | | |
| Grip moment - closed M (Ncm) | 1,6xP | 8xP | 17xP | 34xP | 61xP |
| Grip moment - open M (Ncm) | 2,6xP | 11xP | 23xP | 43xP | 81xP |
| Effective gripping force F (N) | F = M/L x 0,85 L = distance of gripping point (cm) | | | | |
| Length of la. gripping point L (cm) | 3,0 | 4,0 | 6,0 | 7,0 | 8,5 |
| Weight (g) | \varnothing 10 = 40 | \varnothing 16 = 100 | \varnothing 20 = 200 | \varnothing 25 = 330 | \varnothing 32 = 540 |
| Lever open / closed angles | -10° ÷ $+30^\circ$ | | | | |
| Port sizes | M5 (CGA-10 M3) | | | | |
| Magnet | magnet for proximity sensors in piston | | | | |
| Fluid | filtered air, without lubrication. If lubricated air is used, it is recommended to use oil ISOVG32. Once applied the lubrication should never be interrupted. | | | | |

CODING EXAMPLE

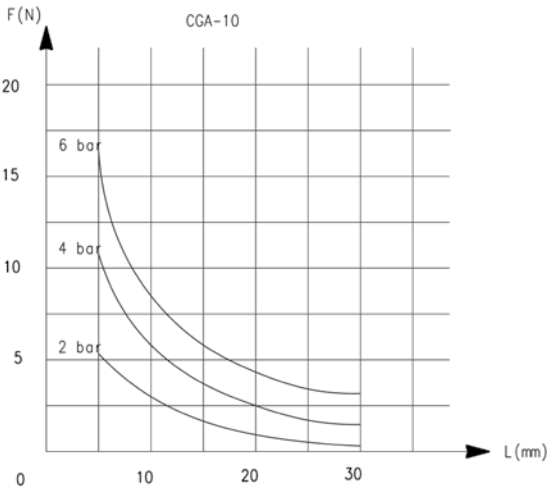
| | | |
|-----|---|----|
| CGA | - | 20 |
|-----|---|----|

| | |
|-----|--|
| CGA | SERIES |
| 20 | <p>SIZES</p> <p>10 = ø 10 mm</p> <p>16 = ø 16 mm</p> <p>20 = ø 20 mm</p> <p>25 = ø 25 mm</p> <p>32 = ø 32 mm</p> |

CLOSING GRIPPING FORCE - CHARACTERISTICS



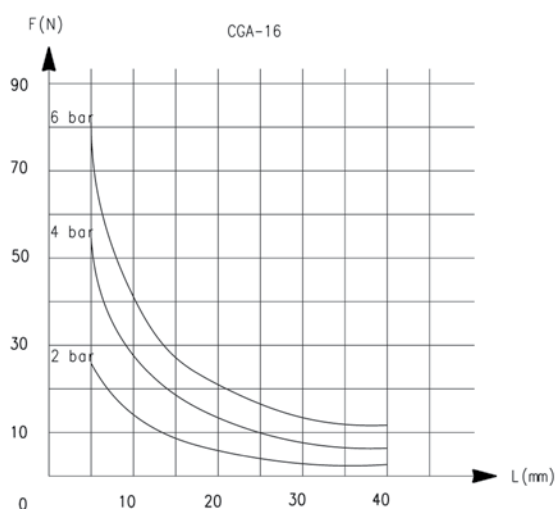
L = Length of gripping point
 F = Gripping force



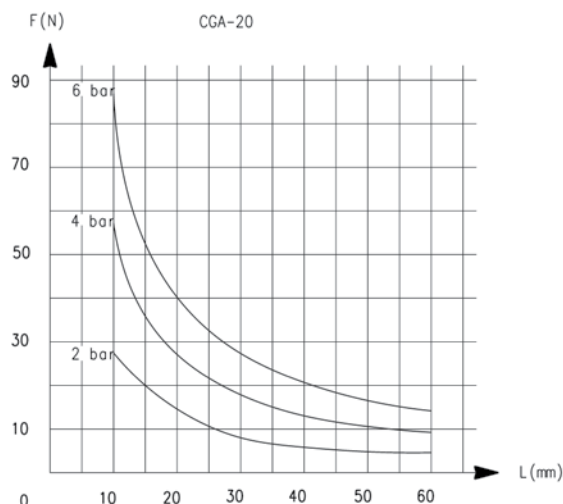
L = Length of gripping point
 F = Gripping force

CLOSING GRIPPING FORCE - CHARACTERISTICS

1

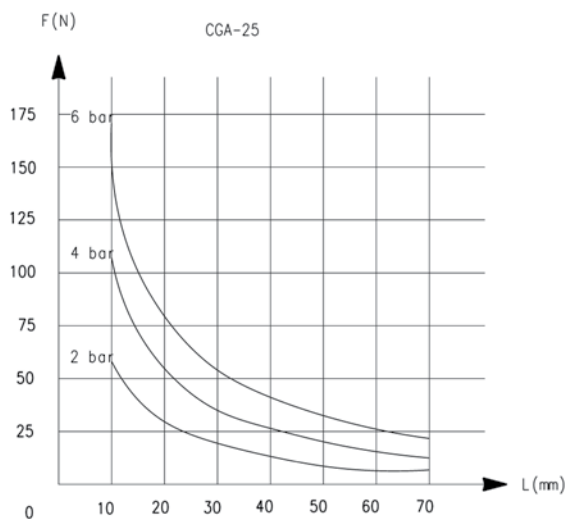


L = Length of gripping point
F = Gripping force

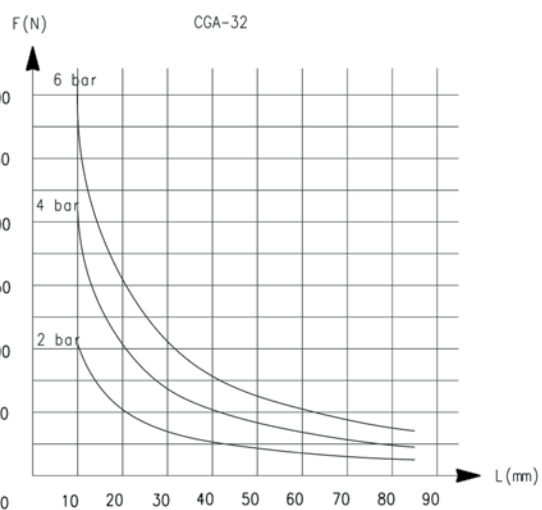


L = Length of gripping point
F = Gripping force

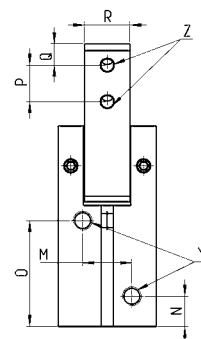
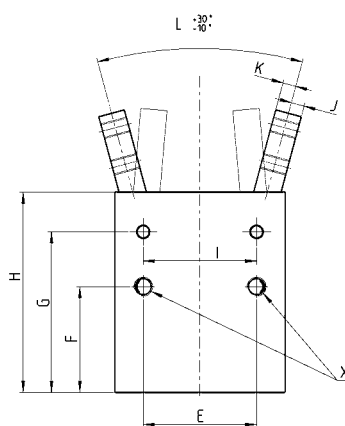
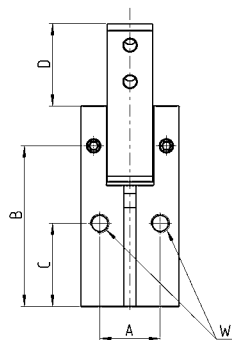
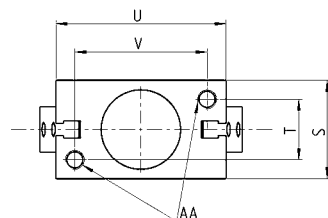
CLOSING GRIPPING FORCE - CHARACTERISTICS



L = Length of gripping point
F = Gripping force



L = Length of gripping point
F = Gripping force



Y = port connection
Z = claw mounting-hole
X.W.AA = Mounting hole

DIMENSIONS

| Mod. | A | B | C | D | E | F | G | H | I | J | K | L | M | N | O | P | Q | R | S | T | U | V |
|---------------|----|------|------|------|----|------|------|------|----|-----|-----|----|----|-----|------|----|---|----|----|----|----|----|
| CGA-10 | 10 | 30,5 | 15,5 | 15,7 | 18 | 20 | 30,5 | 36,5 | 14 | 2,5 | 1,5 | 0° | 10 | 7,5 | 19 | 6 | 3 | 7 | 16 | 10 | 23 | 17 |
| CGA-16 | 14 | 38 | 21 | 17,5 | 24 | 25,5 | 38 | 45,5 | 24 | 3 | 3 | 0° | 12 | 7,5 | 25,5 | 8 | 3 | 9 | 22 | 14 | 34 | 26 |
| CGA-20 | 16 | 42,5 | 22 | 22 | 30 | 28 | 42,5 | 53 | 30 | 3,5 | 3,5 | 0° | 13 | 8 | 28 | 10 | 4 | 12 | 26 | 16 | 45 | 35 |
| CGA-25 | 20 | 48,5 | 24,5 | 26 | 36 | 31,5 | 48,5 | 61 | 36 | 4,5 | 4,5 | 0° | 18 | 9 | 31 | 12 | 5 | 14 | 32 | 20 | 52 | 40 |
| CGA-32 | 26 | 54 | 30 | 30 | 44 | 37,5 | 45 | 68 | 42 | 5 | 5 | 0° | 24 | 10 | 33,5 | 14 | 6 | 18 | 40 | 26 | 60 | 46 |

DIMENSIONS

| DIMENSIONS | | | | | | | | | | |
|---------------|----|----|----|---|----------|---------|----------|---------|-----------|----------|
| Mod. | | | | | W thread | W depth | Z thread | Z depth | AA thread | AA depth |
| CGA-10 | M3 | 7 | M3 | - | M3 | - | M3 | - | M3 | 5 |
| CGA-16 | M4 | 11 | M5 | - | M4 | - | M3 | - | M4 | 7 |
| CGA-20 | M5 | 13 | M5 | - | M5 | - | M4 | - | M5 | 8 |
| CGA-25 | M6 | 15 | M5 | - | M6 | - | M5 | - | M6 | 10 |
| CGA-32 | M6 | 20 | M5 | - | M6 | - | M6 | - | M6 | 10 |