

180° angular grippers

Series CGS

1

Magnetic

Sizes 16 - 20 - 25 - 32

- » Free working area
- » Flexible Mounting



Gripper mod. CGS has mounting holes on three sides which provides flexibility in installation. For an easier installation the gripper can also be equipped with an optional installation adapter mod. C-CGP (female) or C-CGP (male).

Series CGS is available in 4 different sizes and the fingers open 180° in order to enable the gripper to pass certain areas without colliding with other elements. In this way it may be possible to reduce the number of movements in a working sequence. A link mechanism provides high gripping force. Proximity switches can be inserted in the U-shaped grooves on the body.

GENERAL DATA

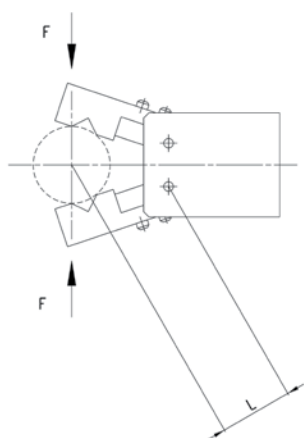
Model	CGS-16; CGS-20; CGS-25; CGS-32			
Bore sizes (mm)	16	20	25	32
Type of operation	double-acting			
Operating pressure	1,5 bar - 7 bar			
Operating temperature	0°C ÷ 80°C			
Max. operating frequency	60 cycles/min			
Lubrication	lever section lubrication required on sliding section			
Grip moment - M (Ncm) closed	8xP	17xP	34xP	61xP P = operating pressure
Grip moment - M (Ncm) open	11xP	23xP	43xP	81xP
Effective gripping force (F) N	F = M/L x 0,9 L = gripping point length (cm)			
Length of max. gripping point L (cm)	6	8	10	12
Weight (g)	140	240	400	700
Lever open/close angles	-1° ÷ +186°			
Repeatability	± 0,2mm			
Port	M5			
Fluid	filtered air, without lubrication. If lubricated air is used, it is recommended to use oil ISO VG32. Once applied, the lubrication should never be interrupted.			

CODING EXAMPLE

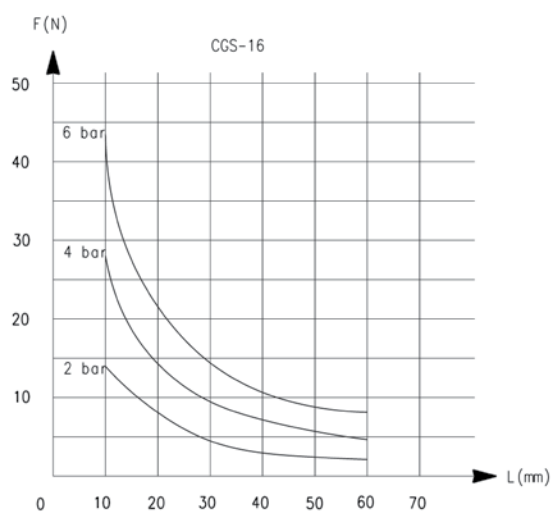
CGS	-	20
-----	---	----

CGS	SERIES
20	SIZES 16 = \varnothing 16 mm 20 = \varnothing 20 mm 25 = \varnothing 25 mm 32 = \varnothing 32 mm

GRIPPING FORCE - CHARACTERISTICS

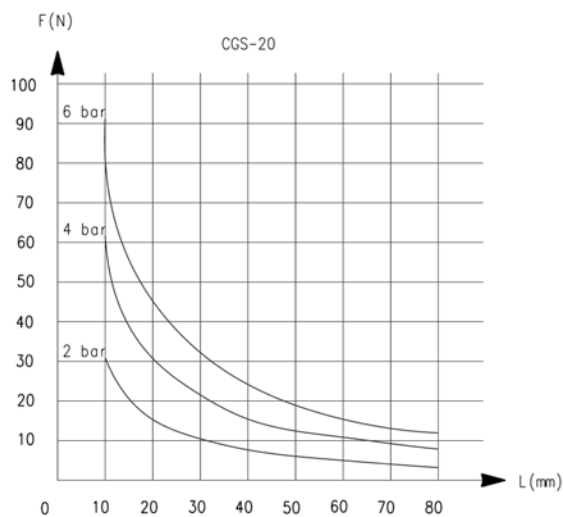


L = Gripping point length
F = Gripping Force

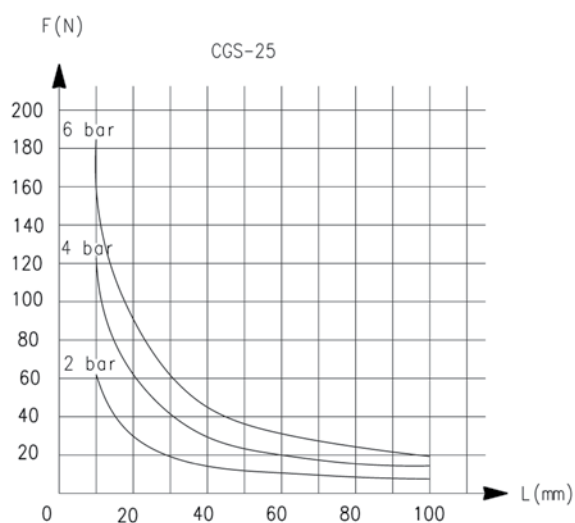


L = Gripping point length
F = Gripping Force

GRIPPING FORCE - CHARACTERISTICS

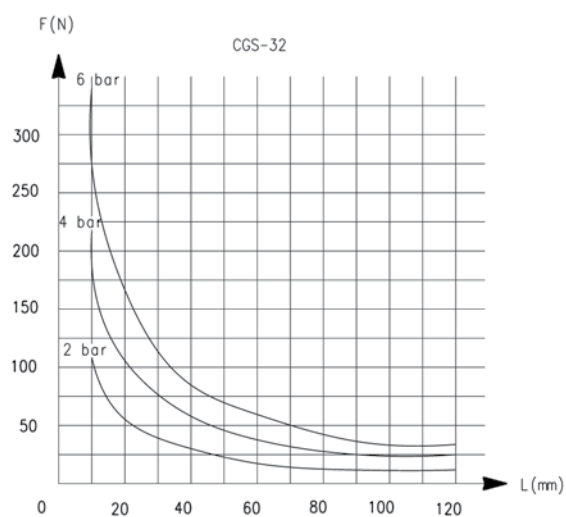


L = Gripping point length
F = Gripping Force



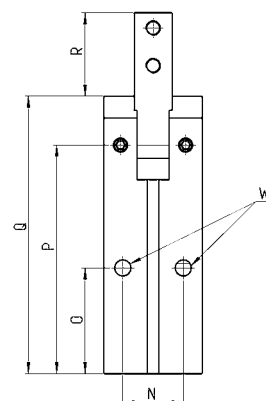
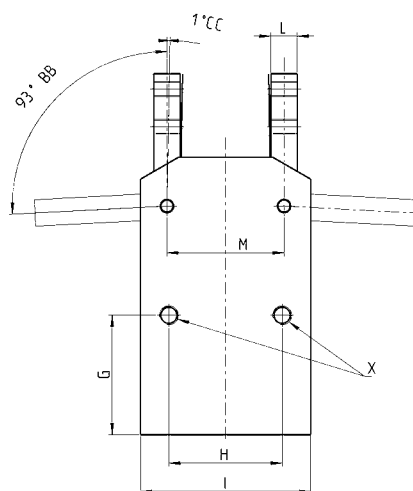
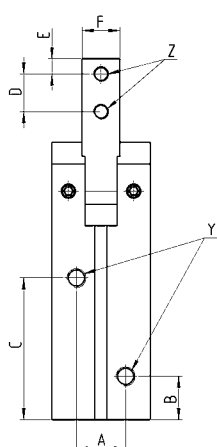
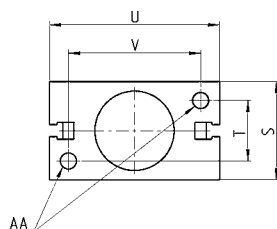
L = Gripping point length
F = Gripping Force

GRIPPING FORCE - CHARACTERISTICS



L = Gripping point length
F = Gripping Force

180° angular grippers Series CGS



Y = port connection
Z = claw mounting-hole
X.W.AA = Mounting hole

BB = opened
CC = closed

DIMENSIONS

Mod.	A	B	C	D	E	F	G	H	I	L	M	N	O	P	Q	R	S	T	U	V
CGS-16	12	10	34	8	4	8	31	25	34	5,5	25	14	25	52	63	17,4	22	14	34	26
CGS-20	13	11,5	37,5	10	4	10	31,6	31	45	7	31	16	28	60,5	73,4	2,1	26	16	45	35
CGS-25	16	12,3	43	14	7	12	35	37	52	9	37	20	30	67,5	83	29,5	32	20	52	40
CGS-32	24	14,6	49,5	16	9	14	40	46	60	11	46	26	35	79	97,7	36,8	40	26	60	46

DIMENSIONS

Mod.	X thread	X depth	Y thread	Y depth	W depth	W depth	Z thread	Z depth	AA thread	AA depth
CGS-16	M4	9	M5	-	M4	7	M3	-	M4	7
CGS-20	M5	8	M5	-	M5	10	M4	-	M5	8
CGS-25	M5	8	M5	-	M5	8	M5	-	M5	8
CGS-32	M6	10	M5	-	M6	8	M6	-	M6	10