

Guided parallel grippers Series CGB

1

Magnetic

Sizes 16 - 20 - 25 - 32



- » Guided mechanism which allows high repeatability
- » Flexibility in installation
- » High gripping force

The proximity switches can be inserted in the U-shaped grooves on the body. For an easier installation the gripper can also be equipped with an optional installation adaptor mod. C-CGP (female) or L-CGP (male).

The guided parallel gripper Series CGB is available in 4 different sizes and is equipped with a guide mechanism that offers high repeatability. The closing action of the gripper is generated from the cylinder's thrust side, resulting in a higher gripping force. Gripper Series CGB has mounting holes on three sides which provides flexibility in installation.

GENERAL DATA

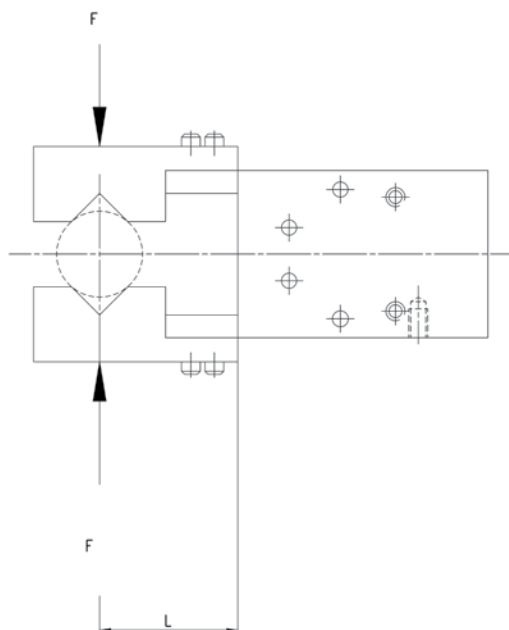
Model		CGB-L-16; CGB-L-20; CGB-L-25; CGB-L-32			
Bore sizes (mm)		Ø 16	Ø 20	Ø 25	Ø 32
Type of operation		double-acting, parallel type			
Operating pressure (bar)		1.5 ÷ 7 bar			
Operating temperature		0°C ÷ 80°C			
Max. operating frequency		180 cycles/min			
Lubrication		lever section - lubrication required on sliding section			
Opening stroke (mm)		Ø 16 = 6	Ø 20 = 8	Ø 25 = 14	Ø 32 = 16
Theoretical holding force* at 5 bar in N	open	Ø 16 = 24	Ø 20 = 47	Ø 25 = 75	Ø 32 = 100
	closed	Ø 16 = 18	Ø 20 = 35	Ø 25 = 60	Ø 32 = 85
with gripping point L = 30mm					
Length. of max. gripping point L mm at 5 bar		40	60	80	100
Weight (g)		Ø 16=160	Ø 20 = 280	Ø 25 = 495	Ø 32 = 785
Repeatability		+/- 0,01mm			
Port sizes		M5			
Fluid		filtered air, without lubrication. If lubricated air is used, it is recommended to use oil ISO VG32. Once applied, the lubrication should never be interrupted.			

CODING EXAMPLE

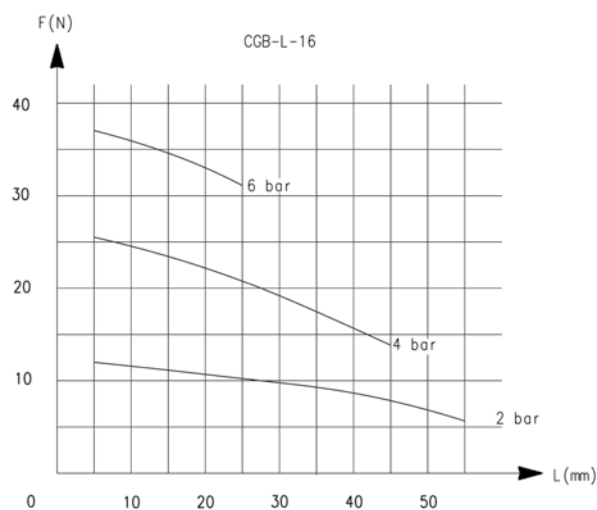
CGB	-	L	-	20
-----	---	---	---	----

CGB	SERIES
L	L = Wide finger position style S = Narrow finger position style (only on request)
20	SIZES 16 = ø 16 mm 20 = ø 20 mm 25 = ø 25 mm 32 = ø 32 mm

GRIPPING FORCE CHARACTERISTICS

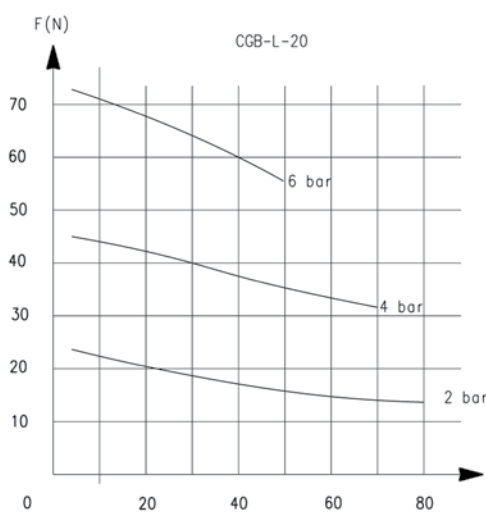


L = Gripping point length
 F = Gripping Force

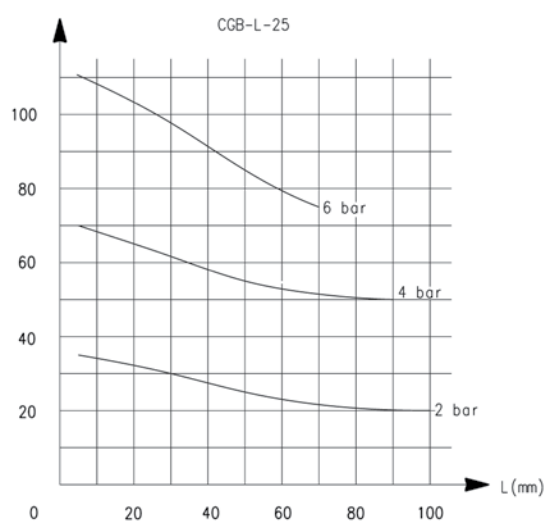


L = Gripping point length
 F = Gripping Force

GRIPPING FORCE CHARACTERISTICS

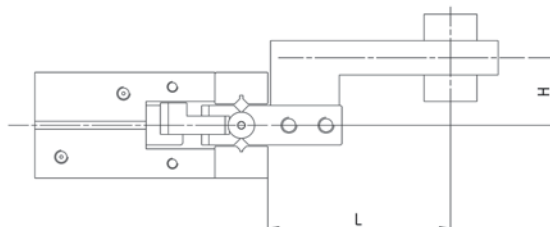
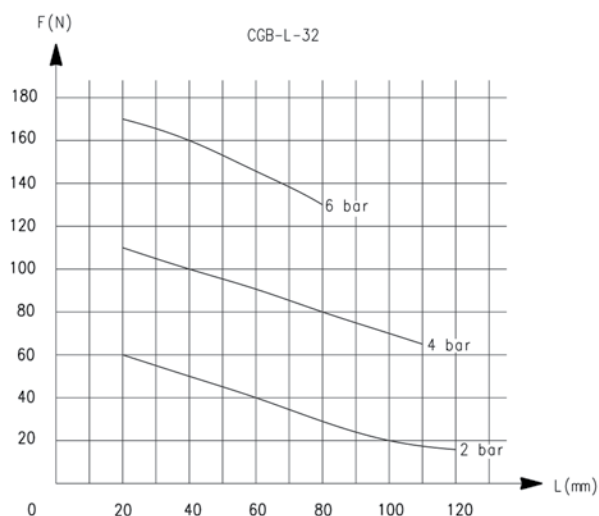


L = Gripping point length
 F = Gripping Force



L = Gripping point length
 F = Gripping Force

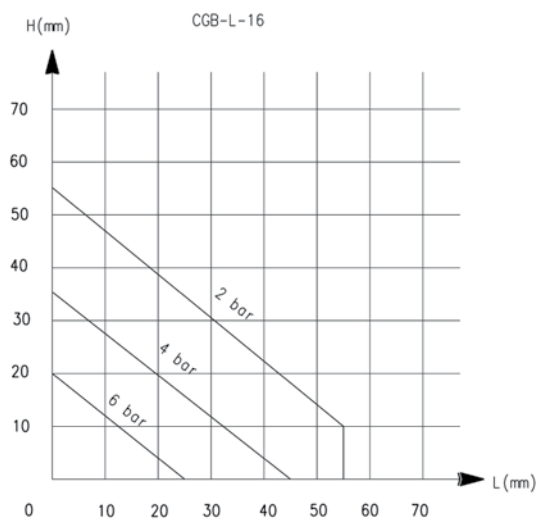
GRIPPING FORCE CHARACTERISTICS



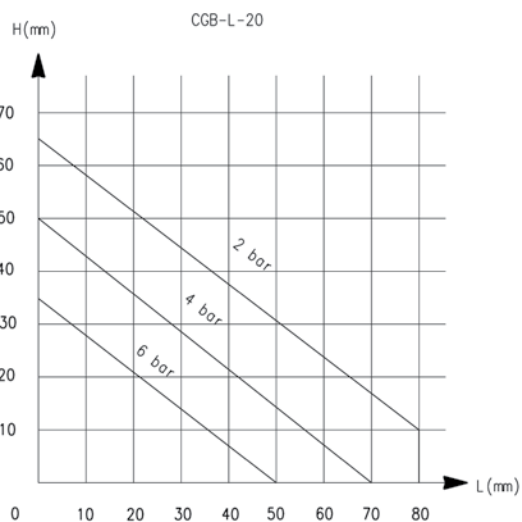
L = Gripping point length
F = Gripping Force

L = Gripping point length
F = Gripping Force

GRIPPING FORCE CHARACTERISTICS



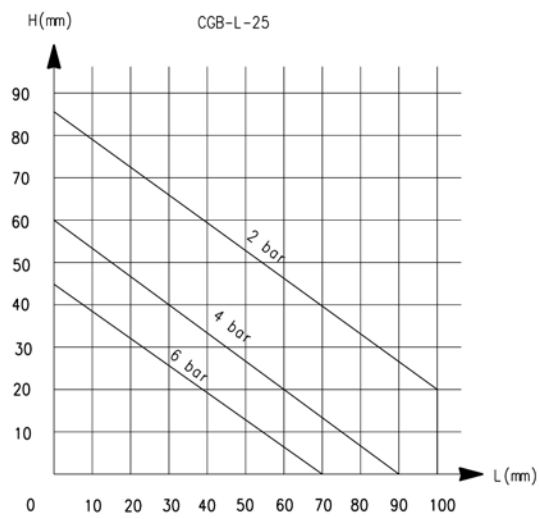
L = Gripping point length
F = Gripping Force



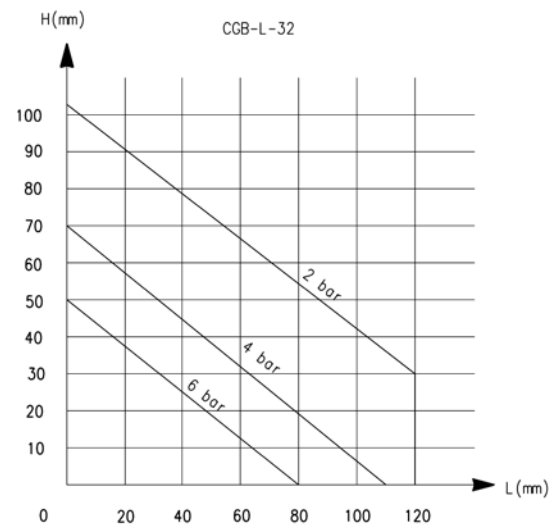
L = Gripping point length
F = Gripping Force

GRIPPING FORCE CHARACTERISTICS

1

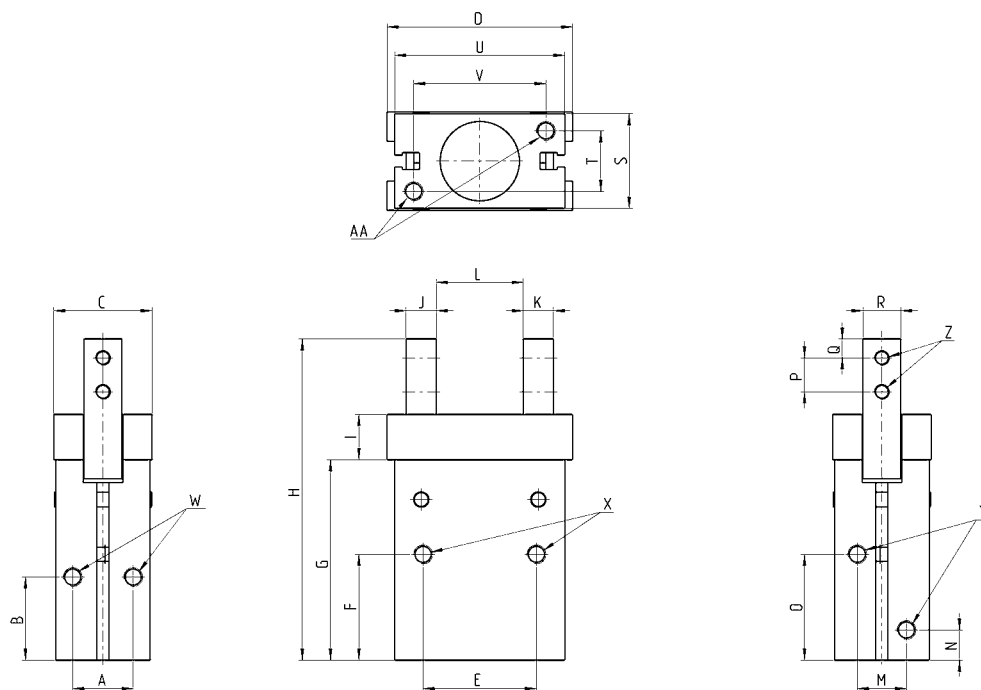


L = Gripping point length
F = Gripping Force



L = Gripping point length
F = Gripping Force

Guided parallel grippers Series CGB-L



Y = port connection
Z = claw mounting-hole
X.W.AA = Mounting hole

DIMENSIONS

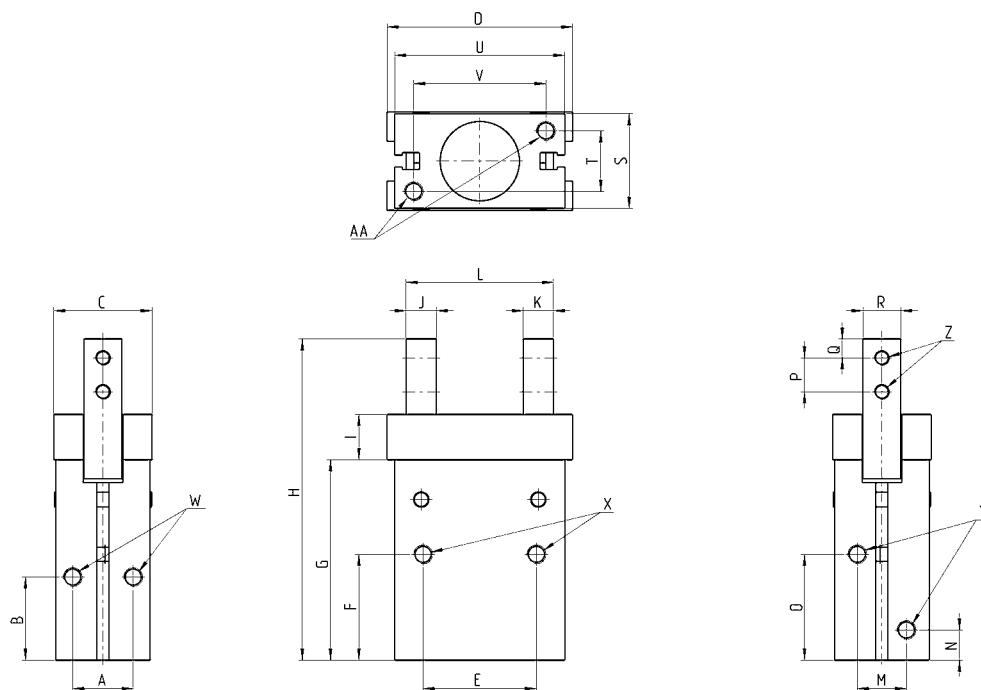
Mod.	A	B	C	D	E	F	G	H	I	J	K	L closed	L open	M	N	O	P	Q	R	S	T	U	V
CGB-L-16	14	21	22	38	24	25,5	45,5	72,5	12	6	6	18	24	12	7,5	25,5	7	4	7	22	14	34	26
CGB-L-20	16	22	26	49	30	28	53	85	12	8	8	23	31	13	8	28	9	5	10	26	16	45	35
CGB-L-25	20	24,5	32	56	36	31,5	63,5	104,5	16	10	10	20	34	18	9	31	12	6	12	32	20	52	40
CGB-L-32	26	30	40	62	44	37,5	68	116	20	10	10	24	40	24	10	33,5	14	6	15	40	26	60	46

DIMENSIONS

Mod.	X thread	X depth	Y thread	Y depth	W thread	W depth	Z thread	Z depth	AA thread	AA depth
CGB-L-16	M4	11	M5	5	M4	7	M3	-	M4	7
CGB-L-20	M5	13	M5	5	M5	8	M4	-	M5	8
CGB-L-25	M6	16	M5	5	M6	10	M5	-	M6	10
CGB-L-32	M6	20	M5	8	M6	10	M6	-	M6	10

Guided parallel grippers (narrow opening) Series CGB-S

On demand only



DIMENSIONS

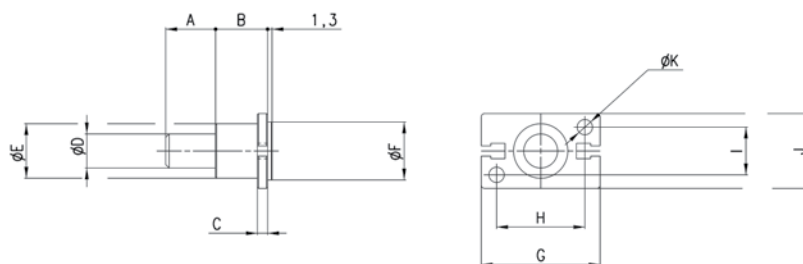
Mod.	A	B	C	D	E	F	G	H	I	J	K	L closed	L open	M	N	O	P	Q	R	S	T	U	V
CGB-S-16	14	21	22	38	24	25,5	45,5	72,5	12	6	6	18	25	12	7,5	25,5	7	4	7	22	14	34	26
CGB-S-20	16	22	26	49	30	28	53	85	12	8	8	22,9	30,9	13	8	28	9	5	10	26	16	45	35
CGB-S-25	20	24,5	32	56	36	31,5	63,5	104,5	16	10	10	28,4	42	18	9	31	12	6	12	32	20	52	40
CGB-S-32	26	30	40	62	44	37,5	68	116	20	10	10	28	43,5	24	10	33,5	14	6	15	40	26	60	46

DIMENSIONS

Mod.	X thread	X depth	Y thread	Y depth	W thread	W depth	Z thread	Z depth	AA thread	AA depth
CGB-S-16	M4	11	M5	5	M4	7	M3	-	M4	7
CGB-S-20	M5	13	M5	5	M5	8	M4	-	M5	8
CGB-S-25	M6	16	M5	5	M6	10	M5	-	M6	10
CGB-S-32	M6	20	M5	8	M6	10	M6	-	M6	10

Mounting brackets Mod. L-CGP

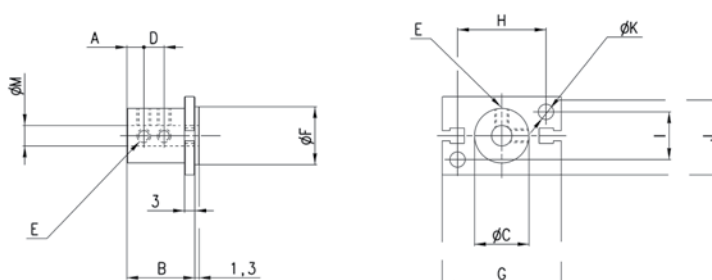
for gripper Series CGA, CGP, CGS and CGB



Mod.	A	B	C	D	E	F	G	H	I	J	K
L-CGP-16	15	15	3	10	16	17	35	26	14	22	4,5
L-CGP-20	15	15	3	10	18	21	46	35	16	26	5,5
L-CGP-25	25	17	5	14	26	26	53	40	20	32	6,6
L-CGP-32	25	20	6	16	30	34	61	46	26	40	6,6

Mounting brackets Mod. C-CGP

for gripper Series CGA, CGP, CGS and CGB



Mod.	A	B	C	D	E	F	G	H	I	J	K	M
C-CGP-16	5	20,5	16	7	M4	17	35	26	14	23	4,5	6
C-CGP-20	7	25,5	20	9	M4	21	46	35	16	27	5,5	8
C-CGP-25	8	30,5	25	10	M4	26	53	40	20	33	6,6	10
C-CGP-32	10	40,5	32	15	M4	34	61	46	26	41	6,6	12