

Valves and Solenoid valves Series EN

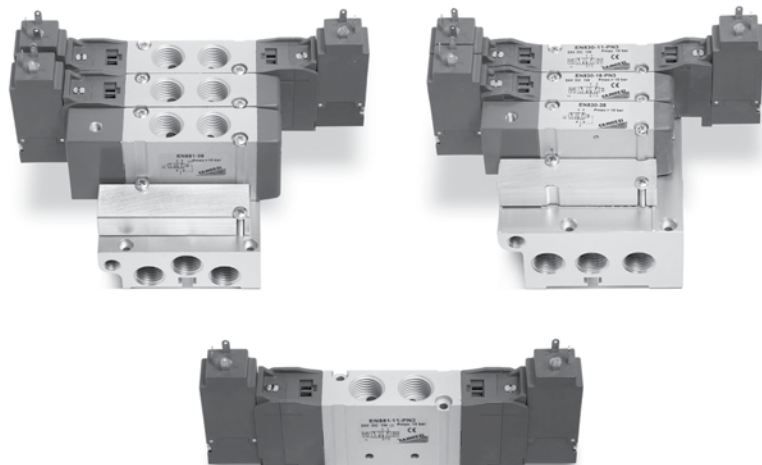
2

5/2 way, 5/3 way CC - CO - CP

With outlets on the body

For individual or manifold assembly

Size 16 - 19 mm



- » Mounting on any flat surface
- » Reduced dimensions
- » Aluminium body and end-covers in technopolymer
- » Space saving

Camozzi has developed a new series of valves to be used in applications requiring a reduced space of installation and in situations where the valves need to be located as near as possible to the operating elements. The single valves can be mounted on any flat surface, allowing compact machine design, which is also enhanced by the reduced dimensions of the valve itself.

Thanks to their robust aluminium bodies, the valves Series EN offer the highest reliability.

This new generation of solenoid valves is the evolution of the previous Series E, size 16 - 19 mm valve with ports threaded into the body. As this valve is completely interchangeable with Series E, part of the code is maintained though the valve has a completely new shape and new components.

GENERAL DATA

Construction	spool-type
Valve functions	5/2 - 5/3 C.C. - 5/3 C.O. - 5/3 C.P.
Materials	body, spool, bases = AL end-covers = technopolymer joints = NBR PU
Ports	G1/8 - G1/4
Temperature	0°C min. + 50° C max
Fluid	filtered air without lubricant. If lubricated air is used, it is recommended to use ISOVG32 oil and to never interrupt lubrication.
Voltage	see coding
Voltage tolerance	± 10%
Power consumption	2W, 1W
Class of insulation	class F
Protection class	IP65 with connector DIN 40050

CODING EXAMPLE

EN	5	3	1	-	11	-	PN3
----	---	---	---	---	----	---	-----

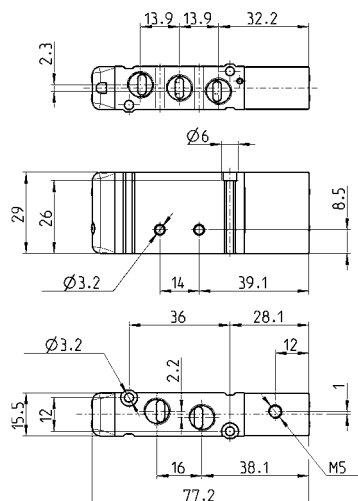
EN	SERIES
5	FUNCTION: 5 = 5/2 6 = 5/3 Centre Closed 7 = 5/3 Centre Open 8 = 5/3 Pressure Centre
3	SIZE: 3 = size 16 5 = size 19
1	BODY TYPE: 1 = body with threaded plate
11	ACTUATION: 11 = electro-pneumatic, bistable 16 = electro-pneumatic, monostable 33 = pneumatic bistable 36 = pneumatic monostable E11 = electro-pneumatic, bistable with external servo-pilot supply E16 = electro-pneumatic, monostable with external servo-pilot supply
PN3	TYPE OF SOLENOID: PN3 = 24V DC - 1W PN4 = 48V DC - 2W PN6 = 110V DC - 2W PN7 = 230V - 2W P13 = 24V DC - 1W P54 = 48V DC - 2W P56 = 110V DC - 2W W53 = 24V DC - 2W W54 = 48V DC - 2W In case of applications with alternate current, use a bridge rectifier connector (see pag. 2/2.07.38)

Pneumatically actuated valve, monostable - size 16

New

5/2 way

Note: the pilot pressure should never be lower than the operating pressure.

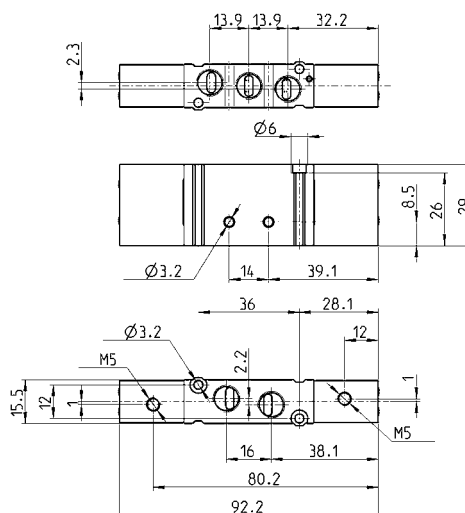


Mod.	Ports	Pilot supply	Pilot supply pressure (bar)	Operating pressure (bar)	Flow (Nl/min)
EN531-36	G1/8	M5	2,5 ÷ 10	-0,9 ÷ 10	550

Pneumatically actuated valve, bistable - size 16

New

5/2 way

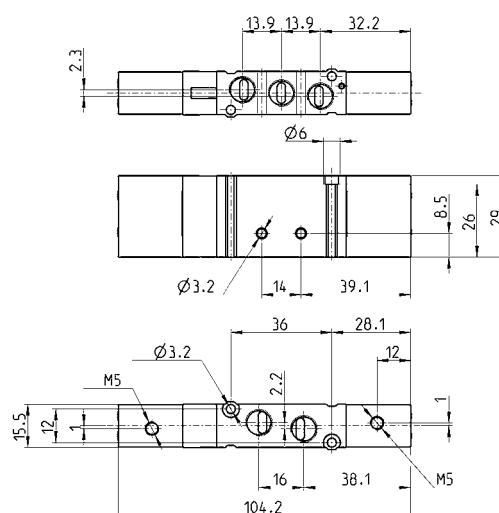


Mod.	Ports	Pilot supply	Pilot supply pressure (bar)	Operating pressure (bar)	Flow (Nl/min)
EN531-33	G1/8	M5	2 ÷ 10	-0,9 ÷ 10	550

Pneumatically actuated valve - size 16

New

5/3 way
 CC = Centres closed
 CO = Centres open
 CP = Pressure Centres



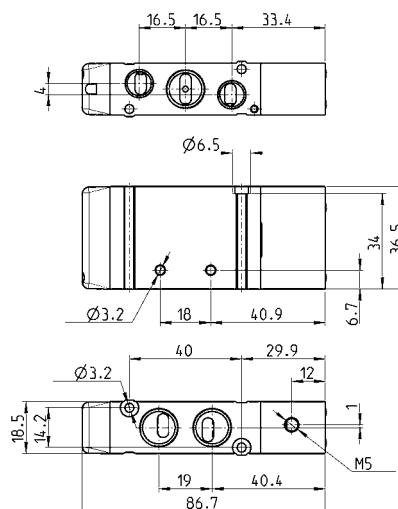
Mod.	Ports	Pilot supply	Pilot supply pressure (bar)	Operating pressure (bar)	Flow (NI/min)	Symbol
EN631-33	G1/8	M5	3 ÷ 10	-0.9 ÷ 10	550	U1
EN731-33	G1/8	M5	3 ÷ 10	-0.9 ÷ 10	550	V1
EN831-33	G1/8	M5	3 ÷ 10	-0.9 ÷ 10	550	Z1

Pneumatically actuated valve, monostable - size 19

New

5/2 way

Note: the pilot pressure should never be lower than the operating pressure.

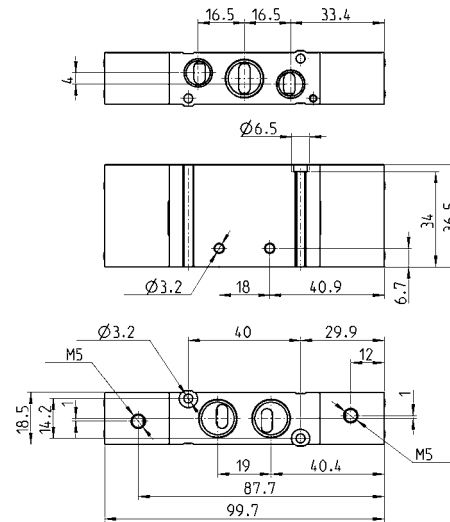
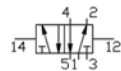


Mod.	Ports 1-2-4	Ports 3-5	Pilot supply	Pilot supply pressure (bar)	Operating pressure (bar)	Flow (NI/min)
EN551-36	G1/4	G1/8	M5	2.5 ÷ 10	-0.9 ÷ 10	920

Pneumatically actuated valve, bistable - size 19

5/2 way

New



Mod.	Ports 1-2-4	Ports 3-5	Pilot supply	Pilot supply pressure (bar)	Operating pressure (bar)	Flow (l/min)
EN551-33	G1/4	G1/8	M5	2 ÷ 10	-0,9 ÷ 10	920

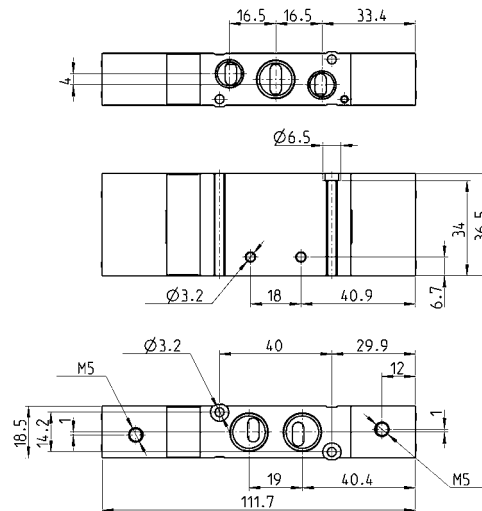
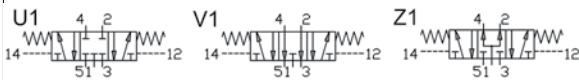
Pneumatically actuated valve - size 19

5/3 way

CC = Centres closed

CO = Centres open

CP = Pressure Centres



Mod.	Ports 1-2-4	Ports 3-5	Pilot supply	Pilot supply pressure (bar)	Operating pressure (bar)	Flow (NI/min)	Symbol
EN651-33	G1/4	G1/8	M5	3 ÷ 10	-0,9 ÷ 10	920	U1
EN751-33	G1/4	G1/8	M5	3 ÷ 10	-0,9 ÷ 10	920	V1
EN851-33	G1/4	G1/8	M5	3 ÷ 10	-0,9 ÷ 10	920	Z1

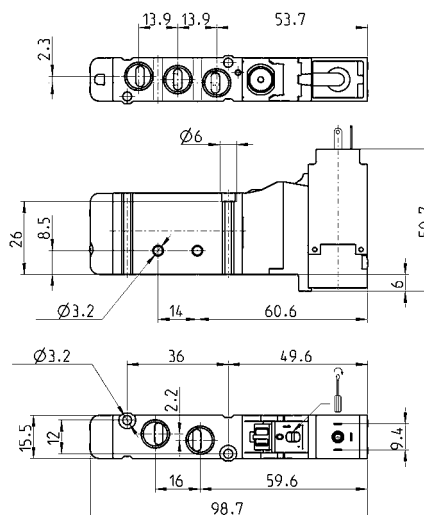
Electro-pneumatically actuated valve, monostable - size 16

New

5/2 way



Connectors: see pages
2/2.07.38-39.



Mod.	Ports	Operating pressure (bar)	Flow (Nl/min)
EN531-16-PN..	G1/8	2,5 ÷ 10	550

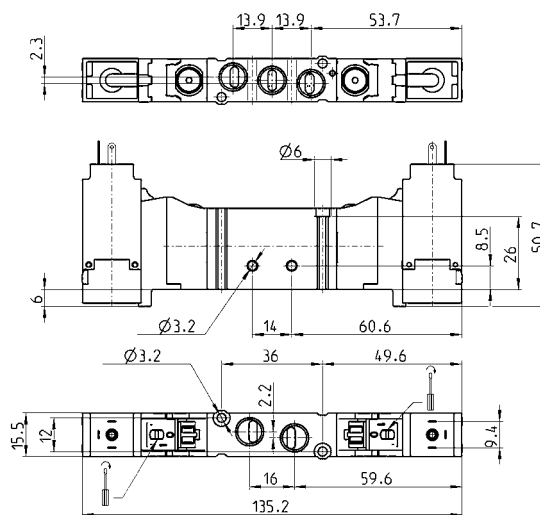
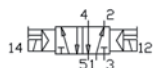
Electro-pneumatically actuated valve, bistable - size 16

New

5/2 way



Connectors: see pages
2/2.07.38-39.



Mod.	Ports	Operating pressure (bar)	Flow (Nl/min)
EN531-11-PN..	G1/8	2 ÷ 10	550

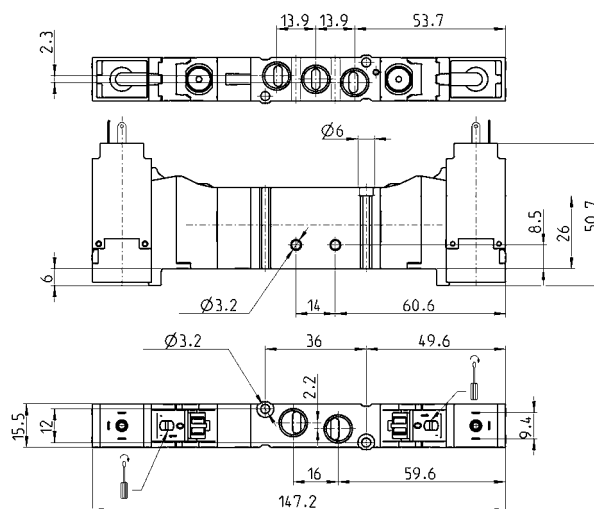
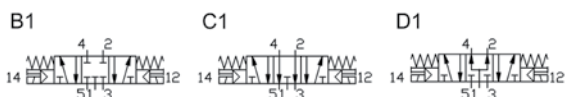
Electro-pneumatically actuated valve - size 16

New

5/3 way
 CC = Centres Closed
 CO = Centres Open
 CP = Pressure Centres



Connectors: see pages
 2/2.2.07.38-39.



Mod.	Ports	Operating pressure (bar)	Flow (l/min)	Symbol
EN631-11-PN..	G1/8	3 ÷ 10	550	B1
EN731-11-PN..	G1/8	3 ÷ 10	550	C1
EN831-11-PN..	G1/8	3 ÷ 10	550	D1

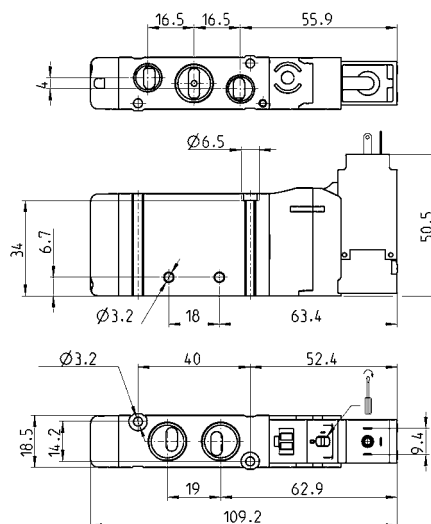
Electro-pneumatically actuated valve, monostable - size 19

New

5/2 way



Connectors: see pages
 2/2.2.07.38-39.

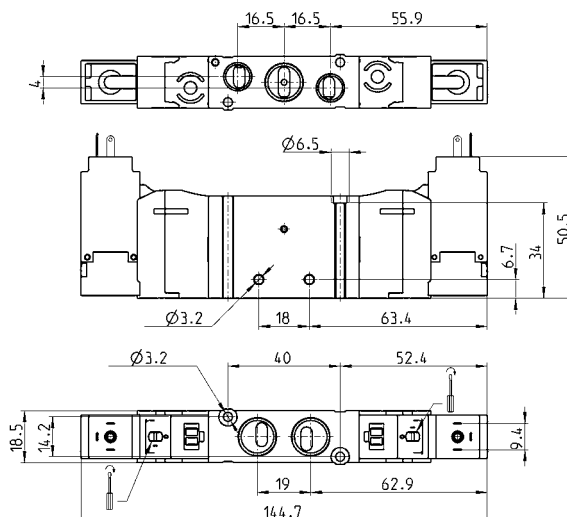
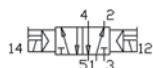


Mod.	Ports 1-2-4	Ports 3-5	Operating pressure (bar)	Flow (l/min)
EN551-16-PN..	G1/4	G1/8	2.5 ÷ 10	920

Electro-pneumatically actuated valve, bistable - size 19

New

5/2 way

Connectors: see pages
2/2.2.07.38-39.

Mod.	Ports 1-2-4	Ports 3-5	Operating pressure (bar)	Flow (Nl/min)
EN551-11-PN..	G1/4	G1/8	2 ÷ 10	920

Electro-pneumatically actuated valve - size 19

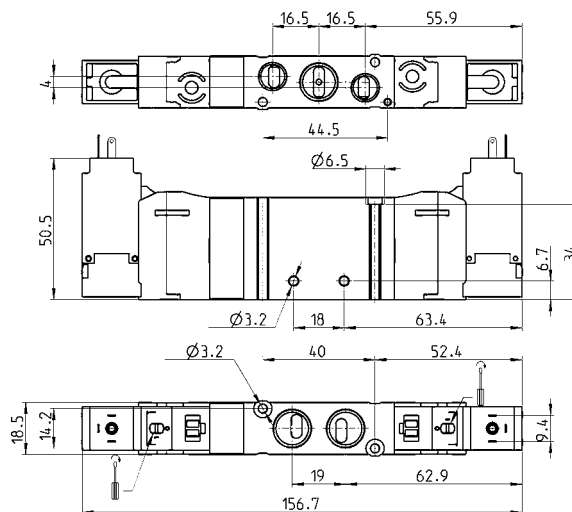
New

5/3 way

CC = Centres Closed

CO = Centres Open

CP = Pressure Centres

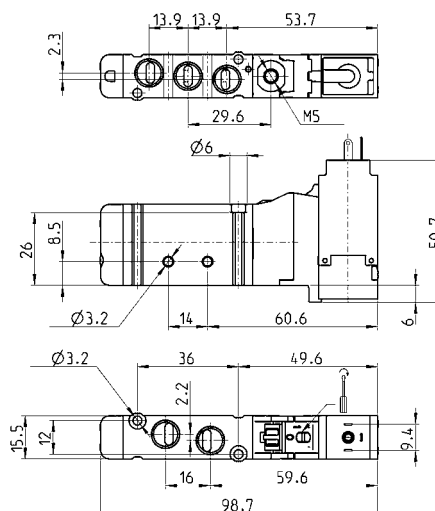
Connectors: see pages
2/2.2.07.38-39.

Mod.	Ports 1-2-4	Ports 3-5	Operating pressure (bar)	Flow (Nl/min)	Symbol
EN651-11-PN..	G1/4	G1/8	3 ÷ 10	920	B1
EN751-11-PN..	G1/4	G1/8	3 ÷ 10	920	C1
EN851-11-PN..	G1/4	G1/8	3 ÷ 10	920	D1

Electro-pneum. valve, monostable - ext. servo-pilot supply - size 16

New

5/2 way

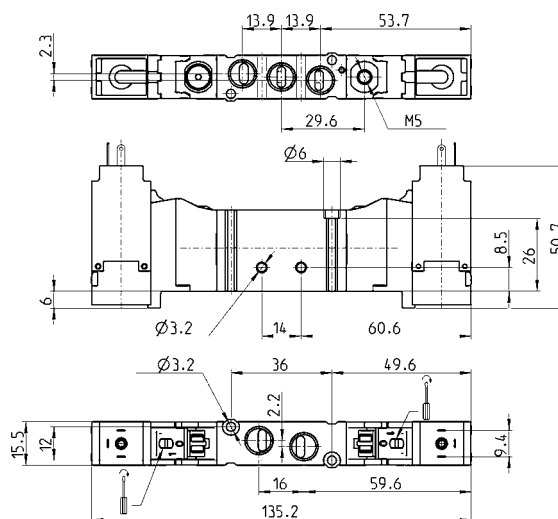
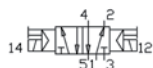
Connectors: see pages
2/2.07.38-39.

Mod.	Ports	Pilot supply	Pilot supply pressure (bar)	Operating pressure (bar)	Flow (NI/min)
EN531-E16-PN..	G1/8	M5	2,5 ÷ 10	- 0,9 ÷ 10	550

Electro-pneum. valve, bistable - ext. servo-pilot supply - size 16

New

5/2 way

Connectors: see pages
2/2.07.38-39.

Mod.	Ports	Pilot supply	Pilot supply pressure (bar)	Operating pressure (bar)	Flow (NI/min)
EN531-E11-PN..	G1/8	M5	2 ÷ 10	- 0,9 ÷ 10	550

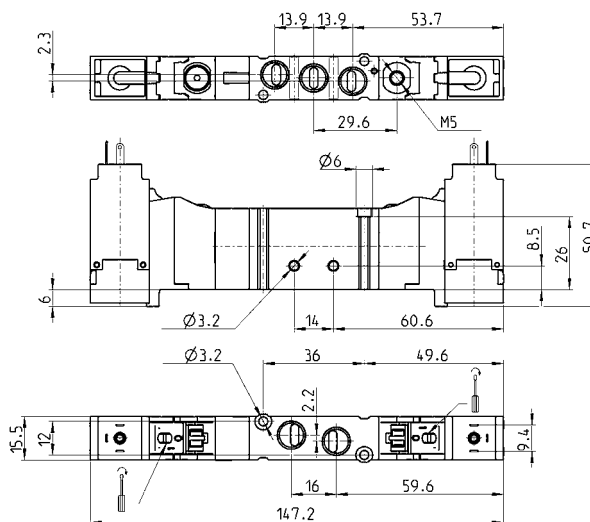
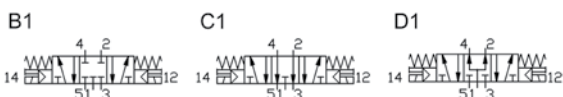
Electro-pneum. valve - ext. servo-pilot supply - size 16

New

5/3 way
 CC = Centres Closed
 CO = Centres Open
 CP = Pressure Centres



Connectors: see pages
 2/2.2.07.38-39.



Mod.	Ports	Pilot supply	Pilot supply pressure (bar)	Operating pressure (bar)	Flow (Nl/min)	Symbol
EN631-E11-PN..	G1/8	M5	3 ÷ 10	-0,9 ÷ 10	550	G7
EN731-E11-PN..	G1/8	M5	3 ÷ 10	-0,9 ÷ 10	550	H7
EN831-E11-PN..	G1/8	M5	3 ÷ 10	-0,9 ÷ 10	550	I7

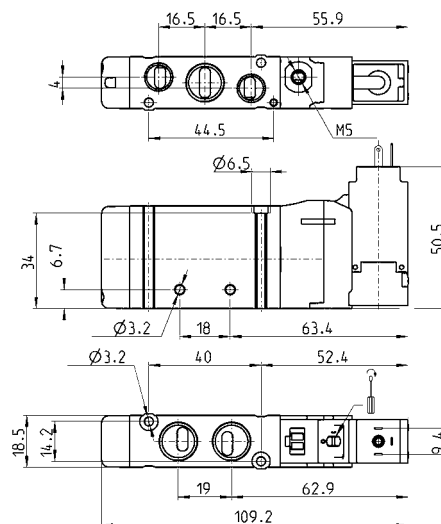
Electro-pneum. valve, monostable - ext. servo-pilot supply - size 19

New

5/2 way



Connectors see pages
 2/2.2.07.38-39.



Mod.	Ports 1-2-4	Ports 3-5	Pilot supply	Pilot supply pressure (bar)	Operating pressure (bar)	Flow (Nl/min)
EN551-E16-PN..	G1/4	G1/8	M5	2,5 ÷ 10	- 0,9 ÷ 10	920

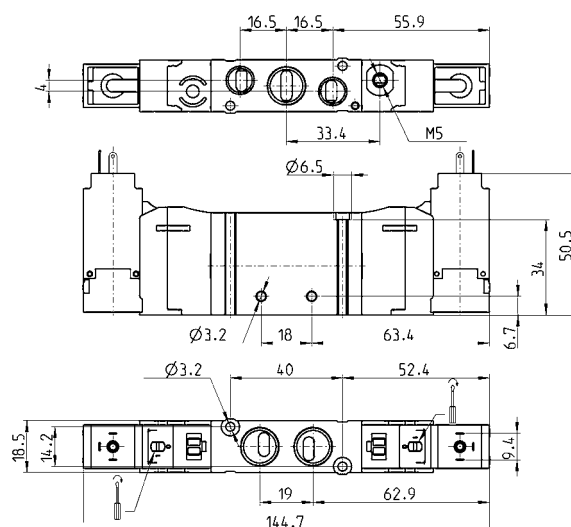
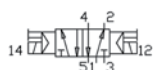
Electro-pneum. valve, bistable - ext. servo-pilot supply - size 19

New

5/2 way



Connectors: see pages
2/2.07.38-39.



Mod.	Ports 1-2-4	Ports 3-5	Pilot supply	Pilot supply pressure (bar)	Operating pressure (bar)	Flow (NI/min)
EN551-E11-PN..	G1/4	G1/8	M5	2 + 10	-0,9 + 10	920

Electro-pneum. valve - ext. servo-pilot supply - size 19

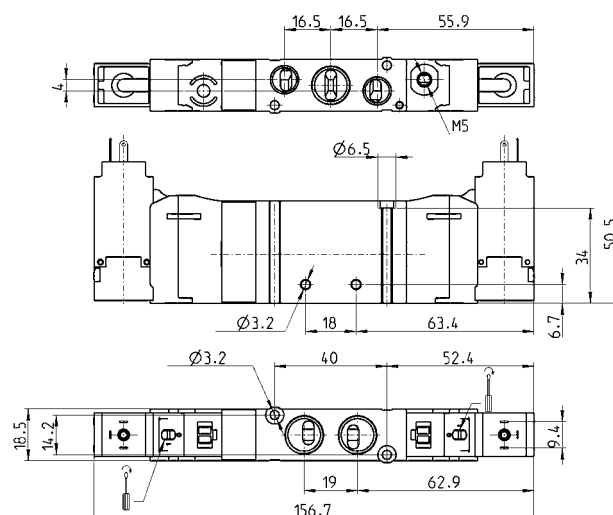
New

5/3 way

CC = Centres Closed
CO = Centres Open
CP = Pressure Centres



Connectors: see pages
2/2.07.38-39.

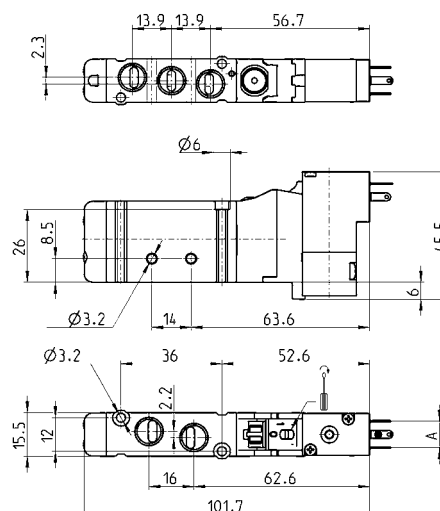


Mod.	Ports 1-2-4	Ports 3-5	Pilot supply	Pilot supply pressure (bar)	Operating pressure (bar)	Flow (NI/min)	Symbol
EN651-E11-PN..	G1/4	G1/8	M5	3 + 10	-0,9 + 10	920	G7
EN751-E11-PN..	G1/4	G1/8	M5	3 + 10	-0,9 + 10	920	H7
EN851-E11-PN..	G1/4	G1/8	M5	3 + 10	-0,9 + 10	920	I7

Electro-pneum. valve, monostable, solenoid P, W - size 16

New

5/2 way

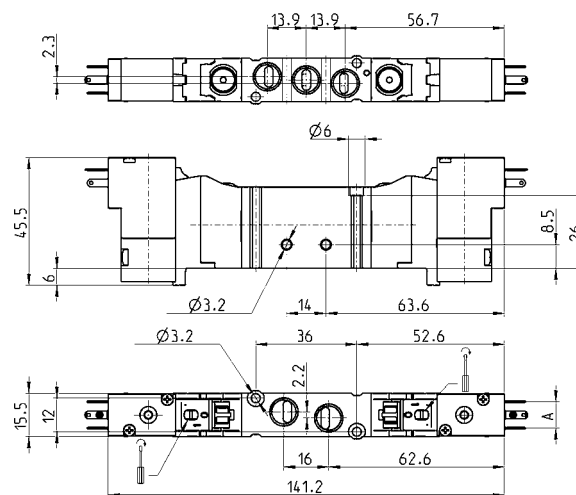
Connectors: see pages
2/2.07.38-39.

Mod.	Ports	A	Operating pressure (bar)	Flow (NI/min)
EN531-16-P13	G1/8	9,4	2,5 ÷ 10	550
EN531-16-P54	G1/8	9,4	2,5 ÷ 10	550
EN531-16-P56	G1/8	9,4	2,5 ÷ 10	550
EN531-16-W53	G1/8	8	2,5 ÷ 10	550
EN531-16-W54	G1/8	8	2,5 ÷ 10	550

Electro-pneum. valve, bistable, solenoid P, W - size 16

New

5/2 way

Connectors: see pages
2/2.07.38-39.

Mod.	Ports	A	Operating pressure (bar)	Flow (NI/min)
EN531-11-P13	G1/8	9,4	2 ÷ 10	550
EN531-11-P54	G1/8	9,4	2 ÷ 10	550
EN531-11-P56	G1/8	9,4	2 ÷ 10	550
EN531-11-W53	G1/8	8	2 ÷ 10	550
EN531-11-W54	G1/8	8	2 ÷ 10	550

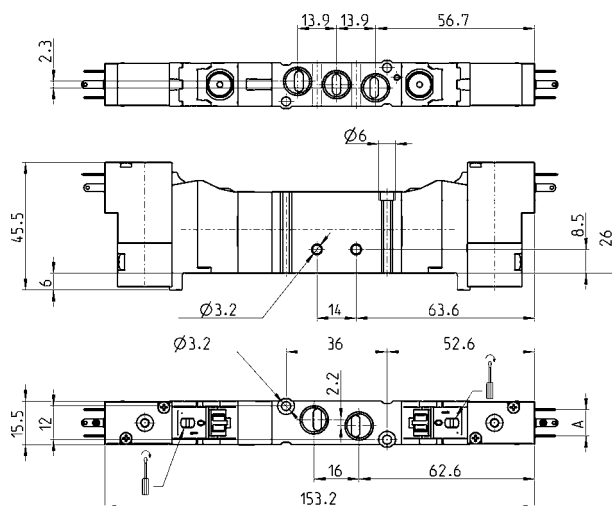
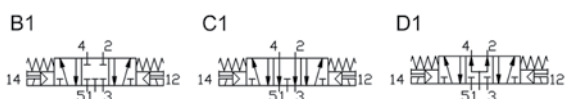
Electro-pneumatic valve, solenoid P, W - size 16

New

5/3 way
 CC = Centres Closed
 CO = Centres Open
 CP = Pressure Centres



Connectors: see pages
 2/2.07.38-39.



Mod.	Ports	A	Operating pressure (bar)	Flow (NI/min)	Symbol
EN631-11-P..	G1/8	9,4	3 ÷ 10	550	B1
EN731-11-P..	G1/8	9,4	3 ÷ 10	550	C1
EN831-11-P..	G1/8	9,4	3 ÷ 10	550	D1
EN631-11-W..	G1/8	8	3 ÷ 10	550	B1
EN731-11-W..	G1/8	8	3 ÷ 10	550	C1
EN831-11-W..	G1/8	8	3 ÷ 10	550	D1

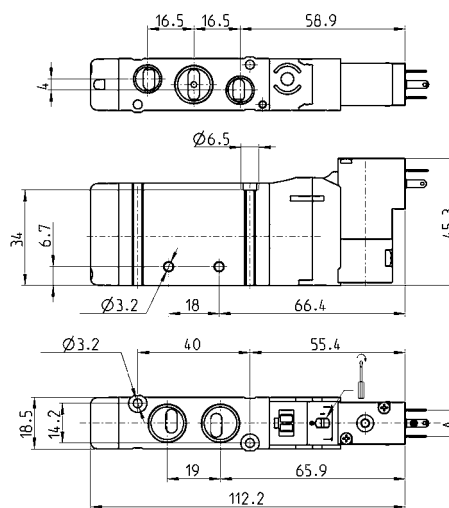
Electro-pneum. valve, monostable, solenoid P, W - size 19

New

5/2 way



Connectors: see pages
 2/2.07.38-39.



Mod.	Ports 1-2-4	Ports 3-5	A	Operating pressure (bar)	Flow (NI/min)
EN551-16-P13	G1/4	G1/8	9,4	2,5 ÷ 10	920
EN551-16-P54	G1/4	G1/8	9,4	2,5 ÷ 10	920
EN551-16-P56	G1/4	G1/8	9,4	2,5 ÷ 10	920
EN551-16-W53	G1/4	G1/8	8	2,5 ÷ 10	920
EN551-16-W54	G1/4	G1/8	8	2,5 ÷ 10	920

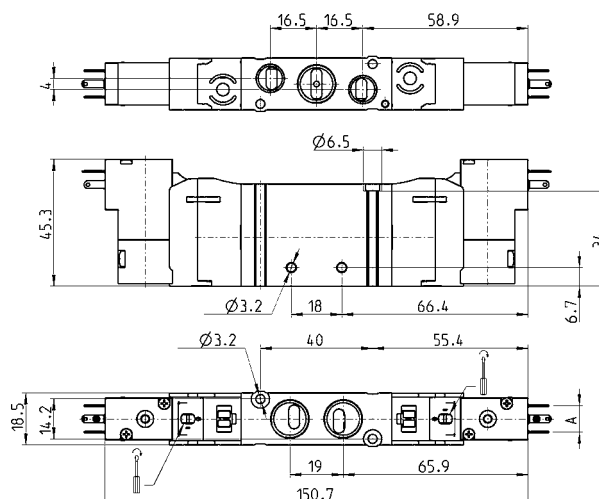
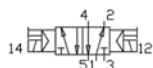
Electro-pneum. valve, bistable, solenoid P, W - size 19

New

5/2 way



Connectors: see pages 2/2.2.07.38-39.



Mod.	Ports 1-2-4	Ports 3-5	A	Operating pressure (bar)	Flow (l/min)
EN551-11-P13	G1/4	G1/8	9,4	2 ÷ 10	920
EN551-11-P54	G1/4	G1/8	9,4	2 ÷ 10	920
EN551-11-P56	G1/4	G1/8	9,4	2 ÷ 10	920
EN551-11-W53	G1/4	G1/8	8	2 ÷ 10	920
EN551-11-W54	G1/4	G1/8	8	2 ÷ 10	920

Electro-pneumatic valve, solenoid P, W - size 19

New

5/3 way

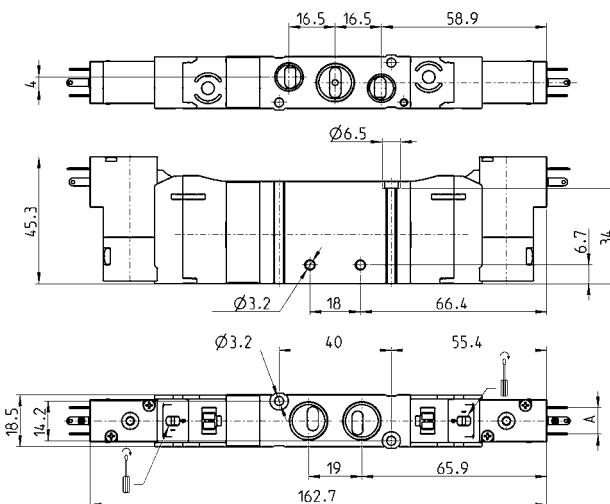
CC = Centres Closed

CO = Centres Open

CP = Pressure Centres



Connectors: see pages 2/2.2.07.38-39.



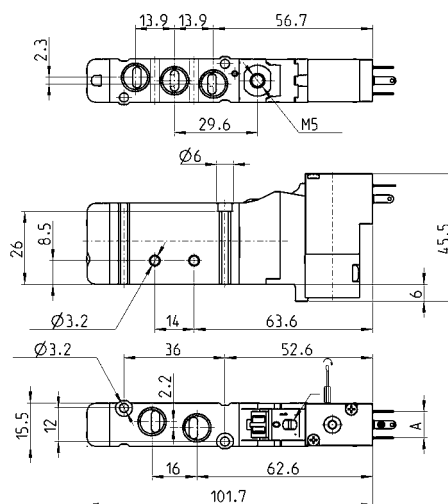
Mod.	Ports	A	Operating pressure (bar)	Flow (NI/min)	Symbol
EN651-11-P..	G1/8	9,4	3 ÷ 10	920	B1
EN751-11-P..	G1/8	9,4	3 ÷ 10	920	C1
EN851-11-P..	G1/8	9,4	3 ÷ 10	920	D1
EN651-11-W..	G1/8	8	3 ÷ 10	920	B1
EN751-11-W..	G1/8	8	3 ÷ 10	920	C1
EN851-11-W..	G1/8	8	3 ÷ 10	920	D1

The company reserves the right to vary models and dimensions without notice.
Products designed for industrial applications. Sale to general public is forbidden.

Electro-pneum. valve, monost. ext. servo-pilot sup., sol. P/W - size 16

New

5/2 way

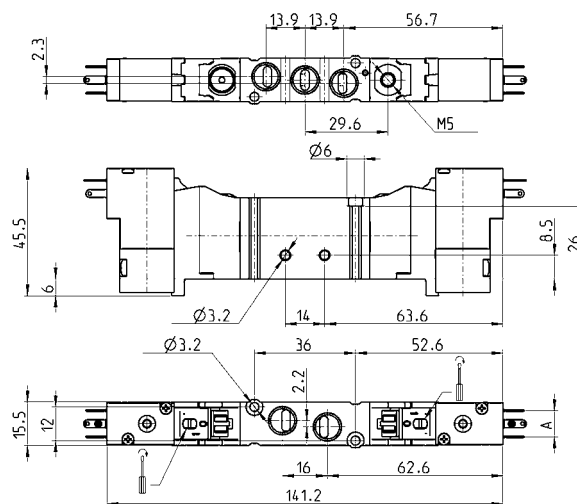
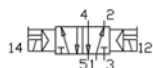
Connectors: see pages
2/2.2.07.38-39.

Mod.	Ports	A	Pilot supply	Pilot supply pressure (bar)	Operating pressure (bar)	Flow (Nl/min)
EN531-E16-P..	G1/8	9,4	M5	2,5 ÷ 10	-0,9 ÷ 10	550
EN531-E16-W..	G1/8	8	M5	2,5 ÷ 10	-0,9 ÷ 10	550

Electro-pneum. valve, bistable ext. servo-pilot sup., sol. P/W - size 16

New

5/2 way

Connectors: see pages
2/2.2.07.38-39.

Mod.	Ports	A	Pilot supply	Pilot supply pressure (bar)	Operating pressure (bar)	Flow (Nl/min)
EN531-E11-P..	G1/8	9,4	M5	2 ÷ 10	-0,9 ÷ 10	550
EN531-E11-W..	G1/8	8	M5	2 ÷ 10	-0,9 ÷ 10	550

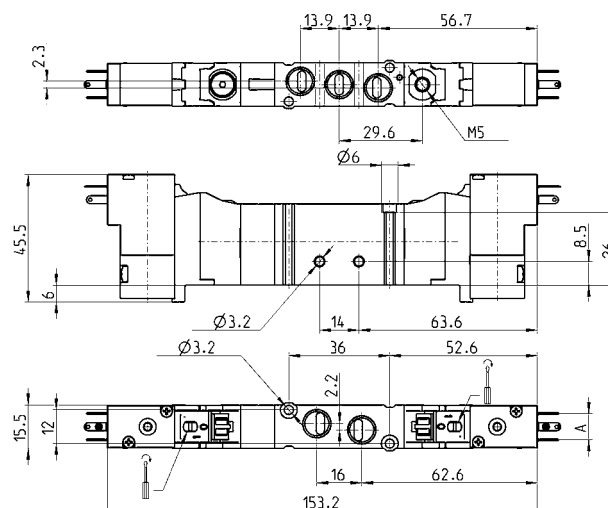
Electro-pneum. valve, ext. servo-pilot supply, solenoid P, W - size 16

New

5/3 way
 CC = Centres Closed
 CO = Centres Open
 CP = Pressure Centres



Connectors: see pages
 2/2.07.38-39.



Mod.	Ports	A	Pilot supply	Pilot supply pressure (bar)	Operating pressure (bar)	Flow (NI/min)	Symbol
EN631-E11-P..	G1/8	9,4	M5	3 ÷ 10	-0,9 ÷ 10	550	B1
EN731-E11-P..	G1/8	9,4	M5	3 ÷ 10	-0,9 ÷ 10	550	C1
EN831-E11-P..	G1/8	9,4	M5	3 ÷ 10	-0,9 ÷ 10	550	D1
EN631-E11-W..	G1/8	8	M5	3 ÷ 10	-0,9 ÷ 10	550	B1
EN731-E11-W..	G1/8	8	M5	3 ÷ 10	-0,9 ÷ 10	550	C1
EN831-E11-W..	G1/8	8	M5	3 ÷ 10	-0,9 ÷ 10	550	D1

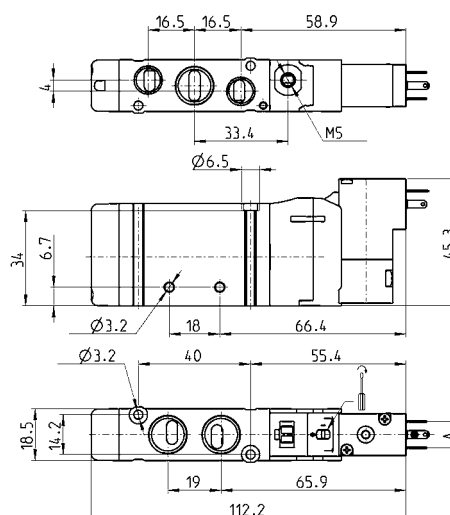
Electro-pneum. valve, monost. ext. servo-pilot sup., sol. P/W - size 19

New

5/2 way



Connectors: see pages
 2/2.07.38-39.



Mod.	Ports 1-2-4	Ports 3-5	A	Pilot supply	Pilot supply pressure (bar)	Operating pressure (bar)	Flow (NI/min)
EN551-E16-P..	G1/4	G1/8	9,4	M5	2,5 ÷ 10	-0,9 ÷ 10	920
EN551-E16-W..	G1/4	G1/8	8	M5	2,5 ÷ 10	-0,9 ÷ 10	920

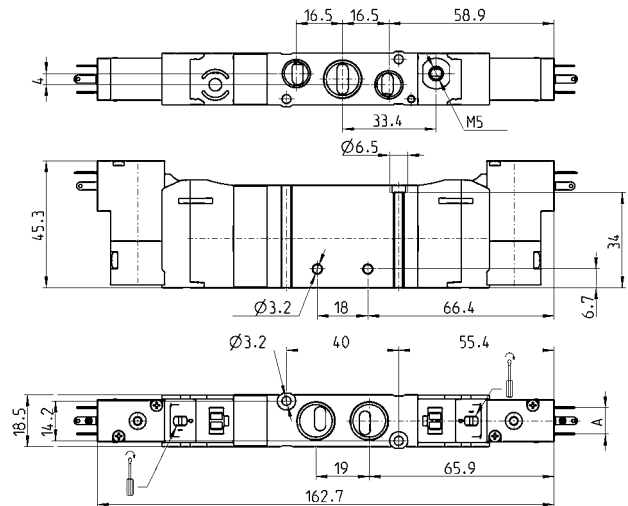
Electro-pneum. valve, ext. servo-pilot supply, solenoid P, W - size 19

New

5/3 way
CC = Centres Closed
CO = Centres Open
CP = Pressure Centres



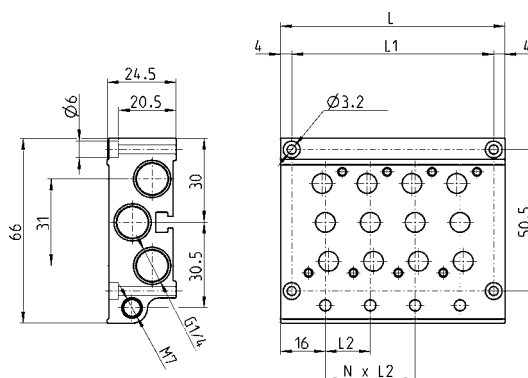
Connectors: see pages 2/2.2.07.38-39.



Mod.	Ports 1-2-4	Ports 3-5	A	Pilot supply	Pilot supply pressure (bar)	Operating pressure (bar)	Flow (NI/min)	Symbol
EN651-E11-P..	G1/4	G1/8	9,4	M5	3 ÷ 10	-0,9 ÷ 10	920	G7
EN751-E11-P..	G1/4	G1/8	9,4	M5	3 ÷ 10	-0,9 ÷ 10	920	H7
EN851-E11-P..	G1/4	G1/8	9,4	M5	3 ÷ 10	-0,9 ÷ 10	920	I7
EN651-E11-W..	G1/4	G1/8	8	M5	3 ÷ 10	-0,9 ÷ 10	920	G7
EN751-E11-W..	G1/4	G1/8	8	M5	3 ÷ 10	-0,9 ÷ 10	920	H7
EN851-E11-W..	G1/4	G1/8	8	M5	3 ÷ 10	-0,9 ÷ 10	920	I7

Manifold for valves size 16 and 19

New



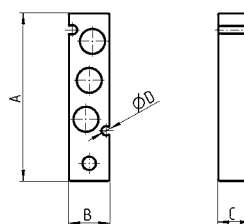
Mod.	N° of valve positions	L	L1	L2
EN531-1004	4	80	72	16
EN531-1006	6	112	106	16
EN531-1008	8	144	136	16
EN551-1004	4	91	83	19
EN551-1006	6	129	121	19
EN551-1008	8	167	159	19

Blanking plate for manifolds - valves with outlets on the body

New

The following is supplied:

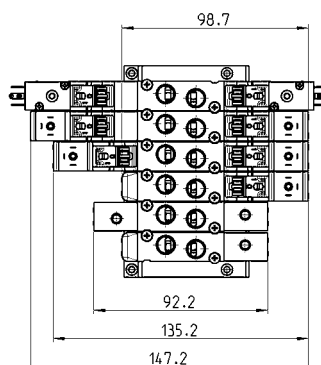
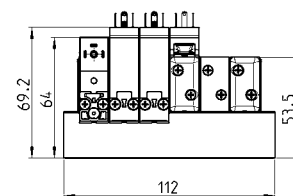
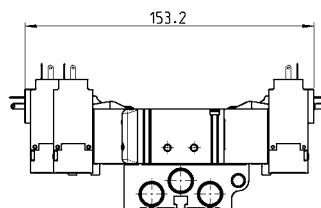
- 1x blanking plate
- 2x screws
- 1x seal



Mod.	Size	A	B	C	$\varnothing D$
TP-EN531	16	60	14,5	12	3,2
TP-EN551	19	62	17,3	12	3,2

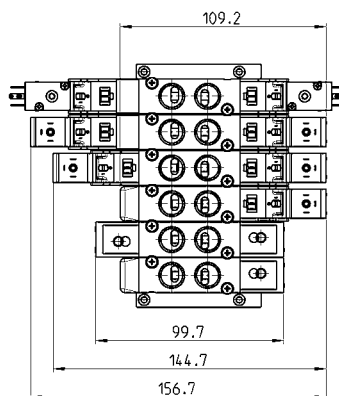
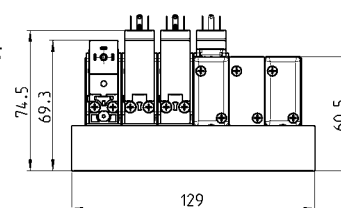
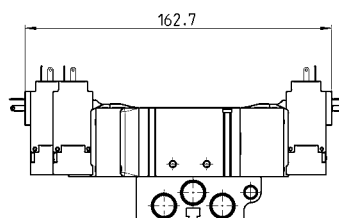
Manifolds complete with valves with outlets on the body - size 16
ports G1/8

New



Manifolds complete with valves with outlets on the body - size 19
ports G1/4

New



CODING EXAMPLE

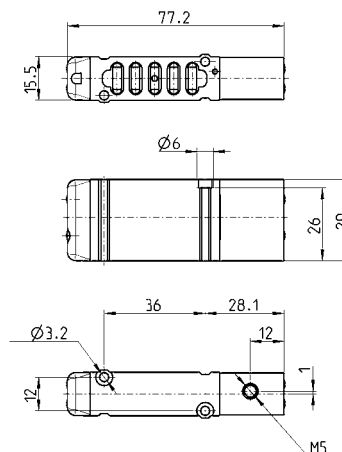
EN	5	3	0	-	11	-	PN3
----	---	---	---	---	----	---	-----

EN	SERIES
5	FUNCTION: 5 = 5/2 6 = 5/3 Centre Closed 7 = 5/3 Centre Open 8 = 5/3 Pressure Centre
3	SIZE: 3 = size 16 5 = size 19
0	BODY TYPE: 0 = body for sub-base
11	ACTUATION: 11 = electro-pneumatic, bistable 16 = electro-pneumatic, monostable 33 = pneumatic bistable 36 = pneumatic monostable E11 = electro-pneumatic, bistable with external servo-pilot supply E16 = electro-pneumatic, monostable with external servo-pilot supply
PN3	TYPE OF SOLENOID: PN3 = 24V DC - 1W PN4 = 48V DC - 2W PN6 = 110V DC - 2W PN7 = 230V - 2W P13 = 24V DC - 1W P54 = 48V DC - 2W P56 = 110V DC - 2W W53 = 24V DC - 2W W54 = 48V DC - 2W In case of applications with alternate current, use a bridge rectifier connector (see pag. 2/2.07.38)

Monostable pneumatic valve with outlets on sub-base - size 16

New

5/2 way

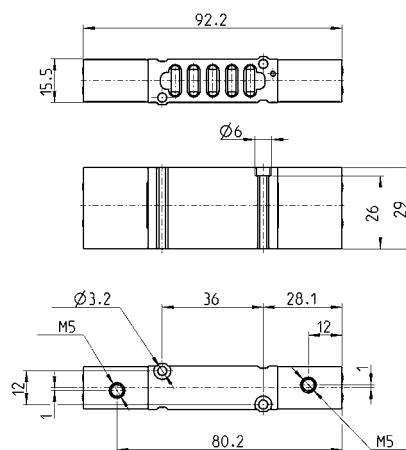


Mod.	Pilot supply	min. pil P. bar	working P. bar	Flow rate NI/min
EN530-36	M5	2,5	2,5 ÷ 10	610

Bistable pneumatic valve with outlets on sub-base - size 16

New

5/2 way

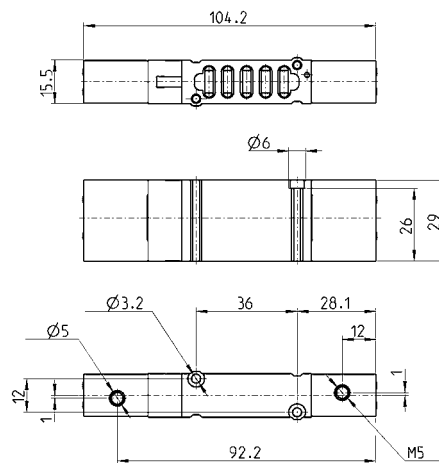


Mod.	Pilot supply	min. pil P. bar	working P. bar	Flow rate NI/min
EN530-33	M5	2	-0,9 ÷ 10	610

Pneumatically actuated valve with outlets on sub-base - size 16

New

5/3 way
 CC = Centres Closed
 CO = Centres Open
 CP = Centres in Pressure

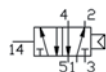
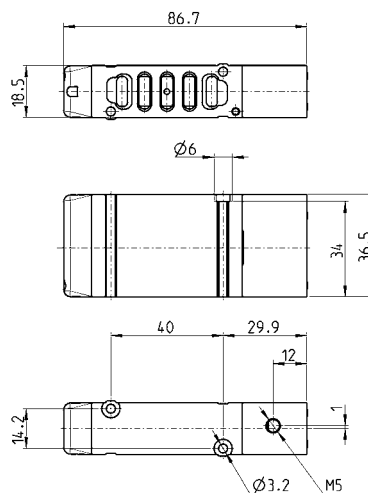


Mod.	Pilot supply	min. pil P. bar	working P. bar	Flow rate NI/min	Symbol
EN630-33	M5	3	-0,9 ÷ 10	610	U1
EN730-33	M5	3	-0,9 ÷ 10	610	V1
EN830-33	M5	3	-0,9 ÷ 10	610	Z1

Pneumatic valve, monostable with outlets on sub-base - size 19

New

5/2 way

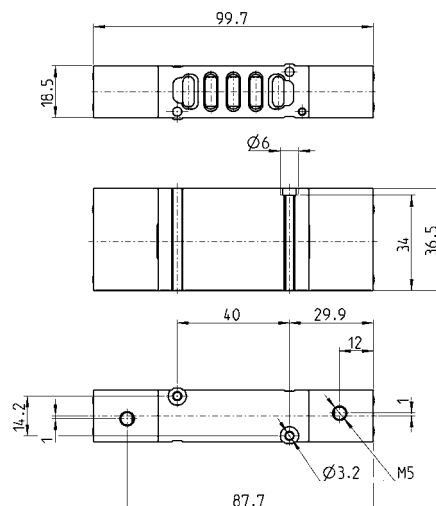


Mod.	Pilot supply	min. pil P. bar	working P. bar	Flow rate NI/min
EN550-36	M5	2,5	2 ÷ 10	1000

Pneumatic valve, bistable with outlets on sub-base - size 19

New

5/2 way



Mod.	Pilot supply	min. pil P. bar	working P. bar	Flow rate NI/min
EN550-33	M5	2	-0,9 ÷ 10	1000

Pneumatically actuated valve with outlets on sub-base - size 19

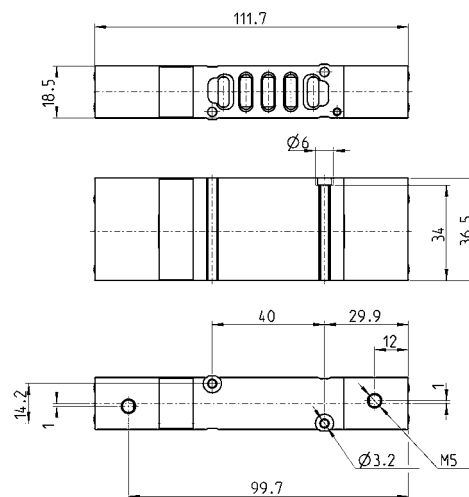
New

5/3 way

CC = Centres Closed

CO = Centres Open

CP = Centres in Pressure



Mod.	Pilot supply	min. pil P. bar	working P. bar	Flow rate NI/min	Symbol
EN650-33	M5	3	-0,9 ÷ 10	1000	U1
EN750-33	M5	3	-0,9 ÷ 10	1000	V1
EN850-33	M5	3	-0,9 ÷ 10	1000	Z1

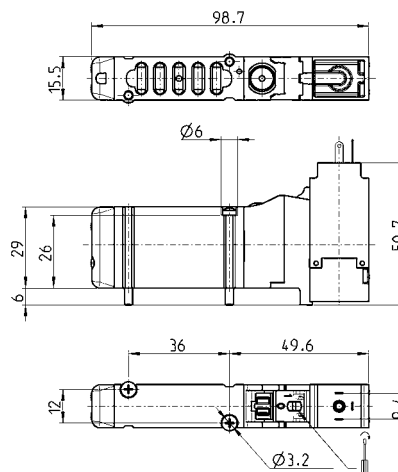
Electropneumatic valve, monostable with outlets on sub-base - s. 16

New

5/2 way



Connectors: see pages
2/2.2.07.38-39.



Mod.	working P. bar	Flow rate NI/min
EN530-16-PN..	2,5 ÷ 10	610

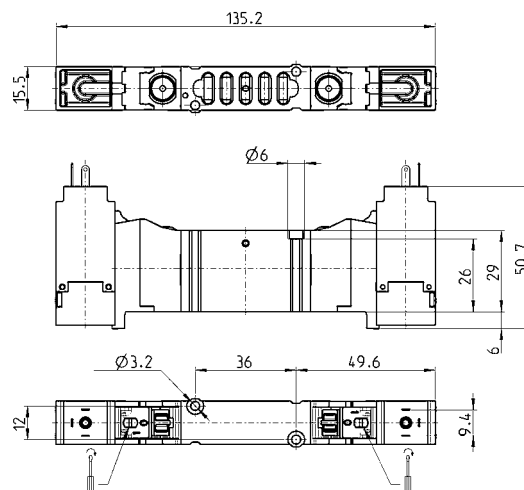
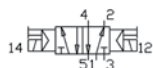
Electropneumatic valve, bistable with outlets on sub-base - size 16

New

5/2 way



Connectors: see pages
2/2.2.07.38-39.



Mod.	working P. bar	Flow rate NI/min
EN530-11-PN..	2 ÷ 10	610

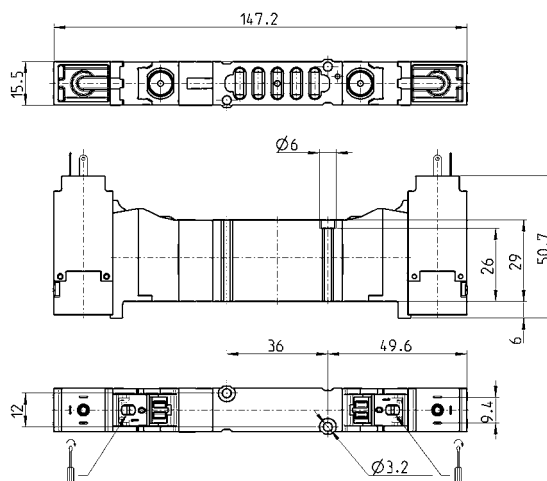
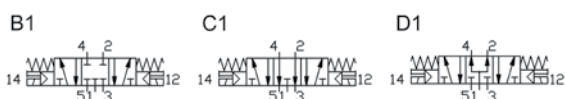
Electropneumathical valve with outlets on sub-base - size 16

New

5/3 way
 CC = Centres Closed
 CO = Centres Open
 CP = Centres in Pressure



Connectors: see pages
 2/2.2.07.38-39.



Mod.	working P. bar	Flow rate NI/min	Symbol
EN630-11-PN..	3 ÷ 10	610	B1
EN730-11-PN..	3 ÷ 10	610	C1
EN830-11-PN..	3 ÷ 10	610	D1

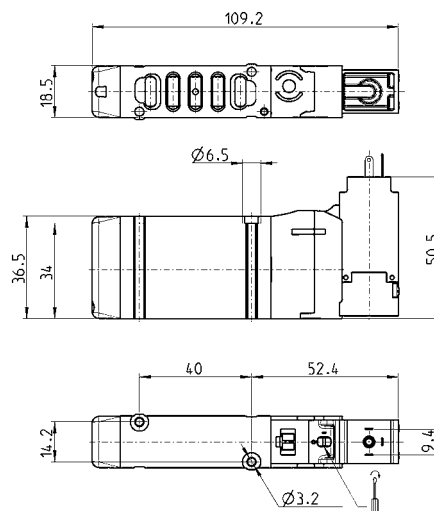
Electropneumatic valve, monostable with outlets on sub-base - s. 19

New

5/2 way



Connectors: see pages
 2/2.2.07.38-39.



Mod.	working P. bar	Flow rate NI/min
EN550-16-PN..	2,5 ÷ 10	1000

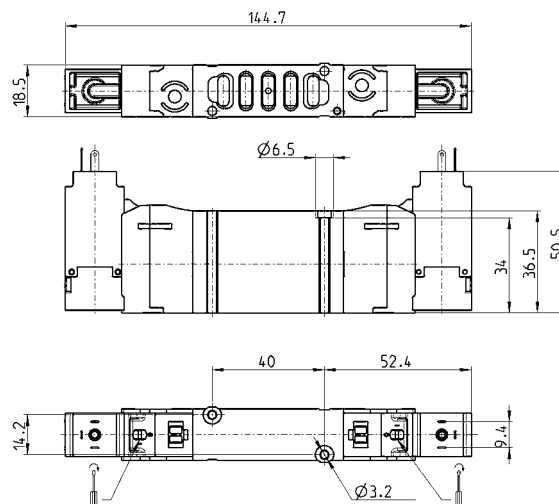
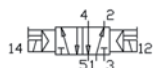
Electropneumatic valve, bistable with outlets on sub-base - size 19

New

5/2 way



Connectors: see pages
2/2.2.07.38-39.



Mod.	working P. bar	Flow rate NI/min
EN550-11-PN..	2 ÷ 10	1000

Electropneumatic valve with outlets on sub-base - size 19

New

5/3 way

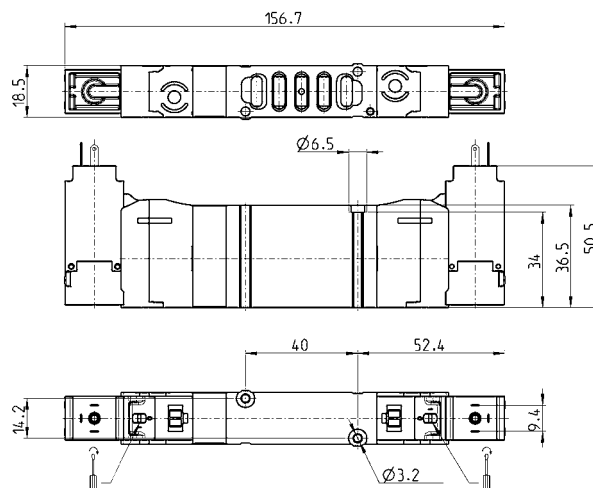
CC = Centres Closed

CO = Centres Open

CP = Centres in Pressure



Connectors: see pages
2/2.2.07.38-39.

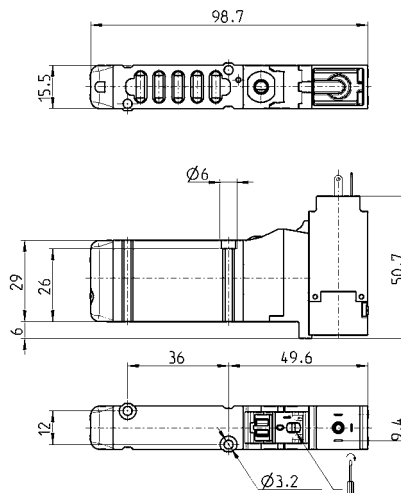


Mod.	working P. bar	Flow rate NI/min	Symbol
EN650-11-PN..	3 ÷ 10	1000	B1
EN750-11-PN..	3 ÷ 10	1000	C1
EN850-11-PN..	3 ÷ 10	1000	D1

Electro-pn. monost. valve, ext. pilot supply, outlets on sub-base - s. 16

New

5/2 way

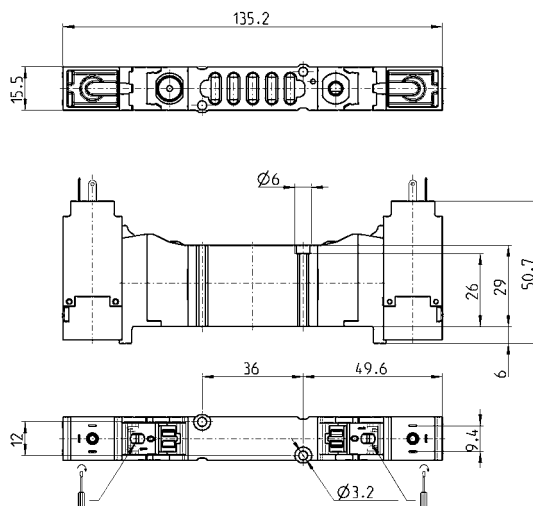
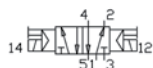
Connectors: see pages
2/2.07.38-39.

Mod.	Pilot supply pressure (bar)	Operating pressure (bar)	Flow (NI/min)
EN530-E16-PN..	2,5 ÷ 10	- 0,9 ÷ 10	610

Electro-pn. bistable valve, ext. pilot supply, outlets on sub-base - s. 16

New

5/2 way

Connectors: see pages
2/2.07.38-39.

Mod.	Pilot supply pressure (bar)	Operating pressure (bar)	Flow (NI/min)
EN530-E11-PN..	2 ÷ 10	-0,9 ÷ 10	610

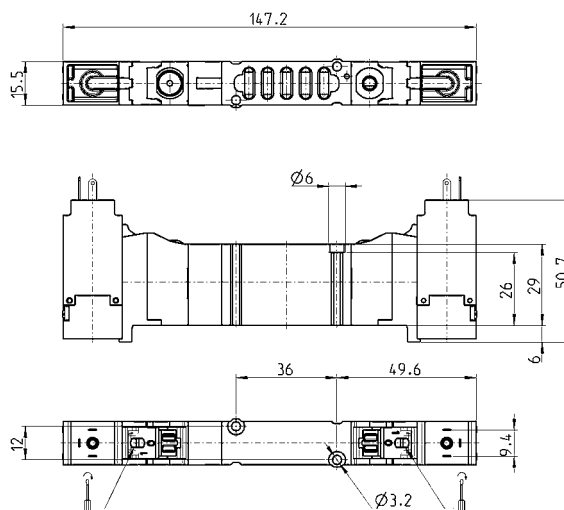
Electro-pneumatic valve, ext. pilot supply, outlets on sub-base - s. 16

New

5/3 way
 CC = Centres Closed
 CO = Centres Open
 CP = Centres in Pressure



Connectors: see pages
 2/2.2.07.38-39.



Mod.	Pilot supply pressure (bar)	Operating pressure (bar)	Flow (NI/min)	Symbol
EN630-E11-PN..	3 ÷ 10	-0,9 ÷ 10	610	G7
EN730-E11-PN..	3 ÷ 10	-0,9 ÷ 10	610	H7
EN830-E11-PN..	3 ÷ 10	-0,9 ÷ 10	610	I7

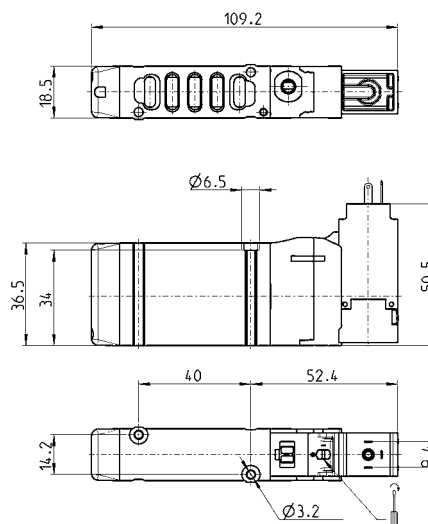
Electro-pn. monost. valve, ext. pilot supply, outlets on sub-base - s. 19

New

5/2 way



Connectors: see pages
 2/2.2.07.38-39.

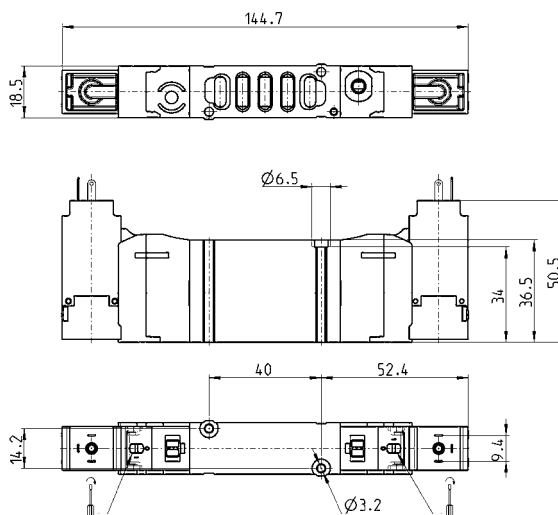
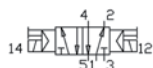


Mod.	Pilot supply pressure (bar)	Operating pressure (bar)	Flow (NI/min)
EN550-E16-PN..	2,5 ÷ 10	- 0,9 ÷ 10	1000

Electro-pn. bistable valve, ext. pilot supply, outlets on sub-base - s. 19

New

5/2 way

Connectors: see pages
2/2.07.38-39.

Mod.	Pilot supply pressure (bar)	Operating pressure (bar)	Flow (NI/min)
EN550-E11-PN..	2 ÷ 10	-0,9 ÷ 10	1000

Electro-pneumatic valve, ext. pilot supply, outlets on sub-base - s. 19

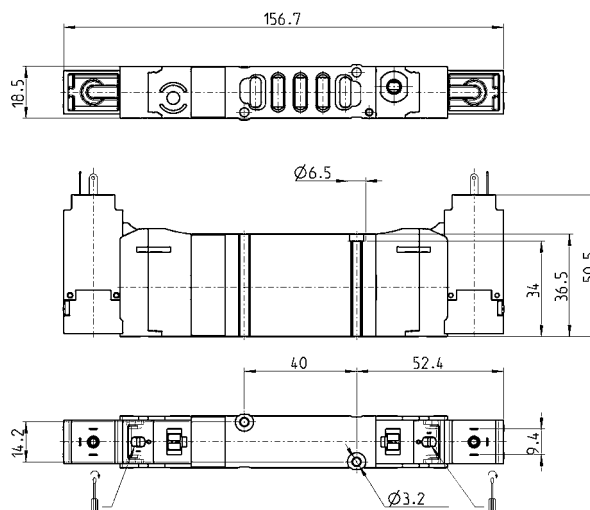
New

5/3 way

CC = Centres Closed

CO = Centres Open

CP = Centres in Pressure

Connectors: see pages
2/2.07.38-39.

Mod.	Pilot supply pressure (bar)	Operating pressure (bar)	Flow (NI/min)	Symbol
EN650-E11-PN..	3 ÷ 10	-0,9 ÷ 10	1000	G7
EN750-E11-PN..	3 ÷ 10	-0,9 ÷ 10	1000	H7
EN850-E11-PN..	3 ÷ 10	-0,9 ÷ 10	1000	I7

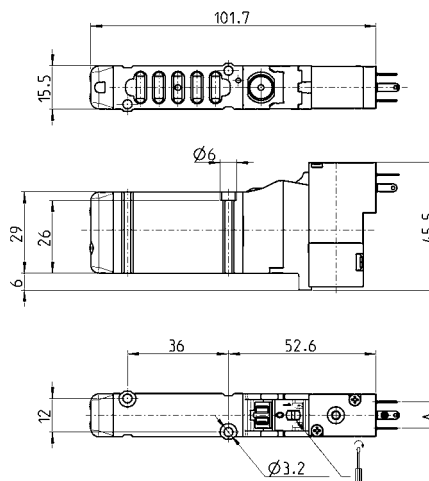
Electro-pn. monostable valve, sol. P / W, outlets on sub-base - s. 16

New

5/2 way



Connectors: see pages
2/2.2.07.38-39.



Mod.	A	Operating pressure (bar)	Flow (NI/min)
EN530-16-P13	9,4	2,5 ÷ 10	610
EN530-16-P54	9,4	2,5 ÷ 10	610
EN530-16-P56	9,4	2,5 ÷ 10	610
EN530-16-W53	8	2,5 ÷ 10	610
EN530-16-W54	8	2,5 ÷ 10	610

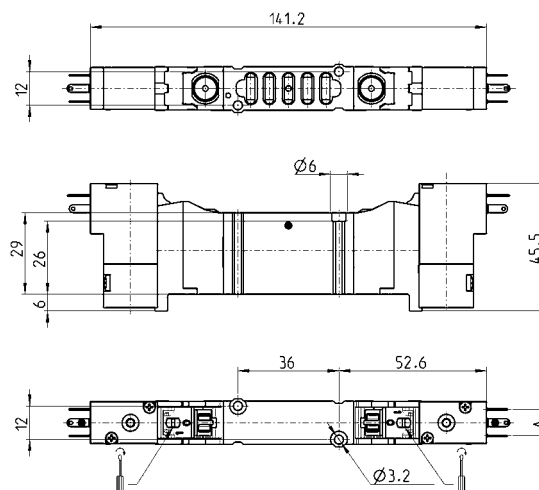
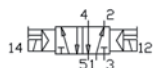
Electro-pn. bistable valve, sol. P / W, outlets on sub-base - size 16

New

5/2 way



Connectors: see pages
2/2.2.07.38-39.



Mod.	A	Operating pressure (bar)	Flow (NI/min)
EN530-11-P13	9,4	2 ÷ 10	610
EN530-11-P54	9,4	2 ÷ 10	610
EN530-11-P56	9,4	2 ÷ 10	610
EN530-11-W53	8	2 ÷ 10	610
EN530-11-W54	8	2 ÷ 10	610

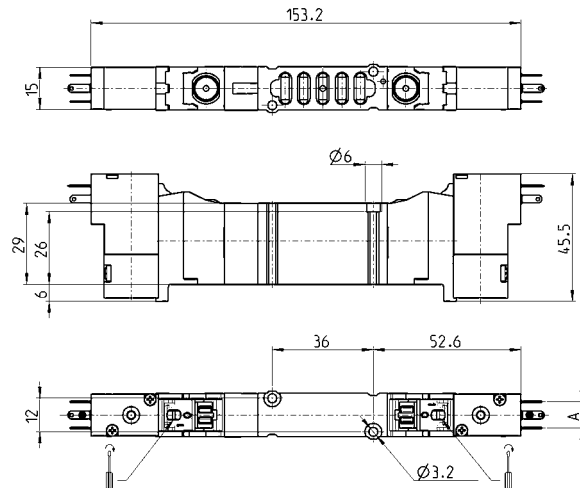
Electro-pneumatic valve, sol. P / W, outlets on sub-base - size 16

New

5/3 way
 CC = Centres Closed
 CO = Centres Open
 CP = Centres in Pressure



Connectors: see pages
 2/2.2.07.38-39.



Mod.	A	Operating pressure (bar)	Flow (Nl/min)	Symbol
EN630-11-P..	9,4	3 + 10	610	B1
EN730-11-P..	9,4	3 + 10	610	C1
EN830-11-P..	9,4	3 + 10	610	D1
EN630-11-W..	8	3 + 10	610	B1
EN730-11-W..	8	3 + 10	610	C1
EN830-11-W..	8	3 + 10	610	D1

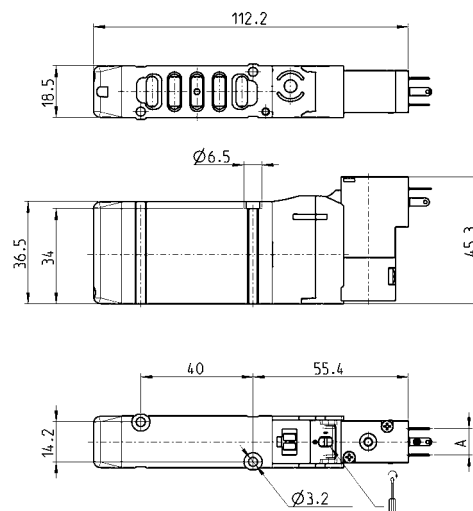
Electro-pn. monostable valve, sol. P / W, outlets on sub-base - s. 19

New

5/2 way



Connectors: see pages
 2/2.2.07.38-39.



Mod.	Operating pressure (bar)	Flow (Nl/min)
EN550-16-P13	2,5 + 10	1000
EN550-16-P54	2,5 + 10	1000
EN550-16-P56	2,5 + 10	1000
EN550-16-W53	2,5 + 10	1000
EN550-16-W54	2,5 + 10	1000

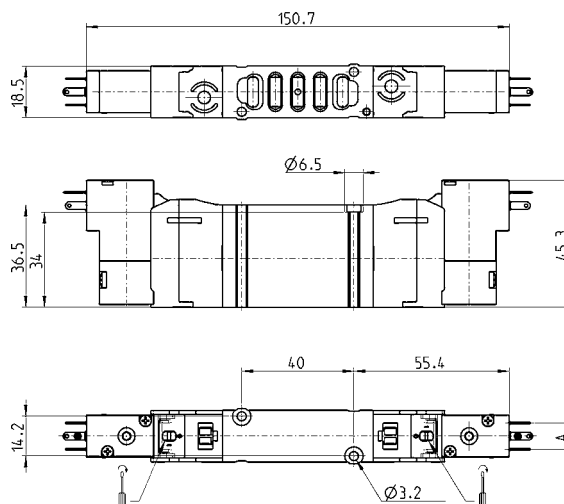
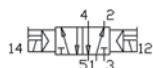
Electro-pn. bistable valve, sol. P / W, outlets on sub-base - size 19

New

5/2 way



Connectors: see pages
2/2.2.07.38-39.



Mod.	A	Operating pressure (bar)	Flow (NI/min)
EN550-11-P13	9,4	2 ÷ 10	1000
EN550-11-P54	9,4	2 ÷ 10	1000
EN550-11-P56	9,4	2 ÷ 10	1000
EN550-11-W53	8	2 ÷ 10	1000
EN550-11-W54	8	2 ÷ 10	1000

Electro-pneumatic valve, sol. P / W, outlets on sub-base - size 19

New

5/3 way

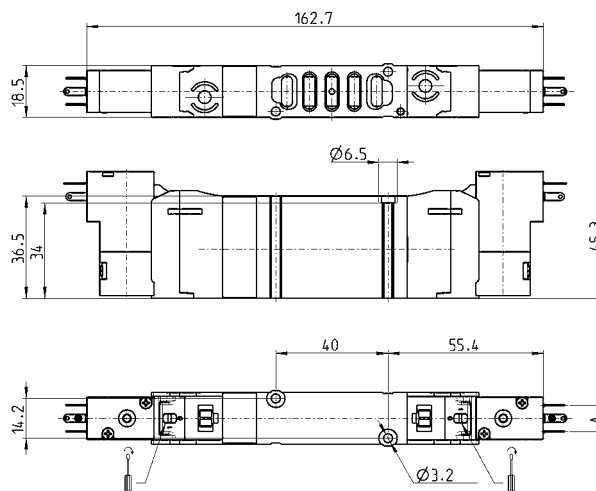
CC = Centres Closed

CO = Centres Open

CP = Centres in Pressure



Connectors: see pages
2/2.2.07.38-39.

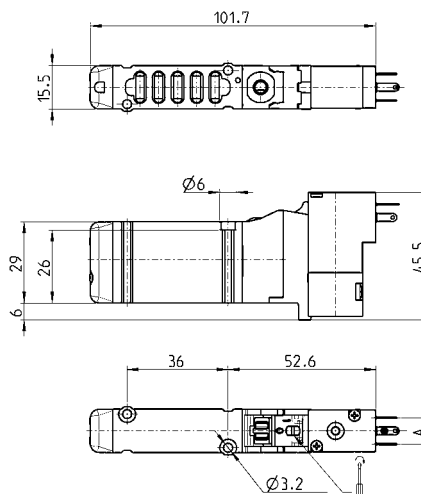


Mod.	A	Operating pressure (bar)	Flow (NI/min)	Symbol
EN650-11-P..	9,4	3 ÷ 10	1000	B1
EN750-11-P..	9,4	3 ÷ 10	1000	C1
EN850-11-P..	9,4	3 ÷ 10	1000	D1
EN650-11-W..	8	3 ÷ 10	1000	B1
EN750-11-W..	8	3 ÷ 10	1000	C1
EN850-11-W..	8	3 ÷ 10	1000	D1

Electro-pn. mono. valve, pilot sup. sol. P / W, outlets on base - s. 16

New

5/2 way

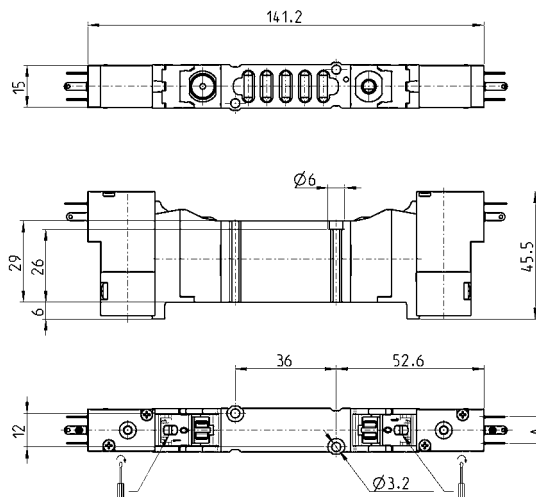
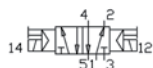
Connectors: see pages
2/2.2.07.38-39.

Mod.	A	Pilot supply pressure (bar)	Operating pressure (bar)	Flow (NI/min)
EN530-E16-P..	9,4	2,5 ÷ 10	-0,9 ÷ 10	610
EN530-E16-W..	8	2,5 ÷ 10	-0,9 ÷ 10	610

Electro-pn. bistab. valve, pilot sup. sol. P / W, outlets on base - s. 16

New

5/2 way

Connectors: see pages
2/2.2.07.38-39.

Mod.	A	Pilot supply pressure (bar)	Operating pressure (bar)	Flow (NI/min)
EN530-E11-P..	9,4	2 ÷ 10	-0,9 ÷ 10	610
EN530-E11-W..	8	2 ÷ 10	-0,9 ÷ 10	610

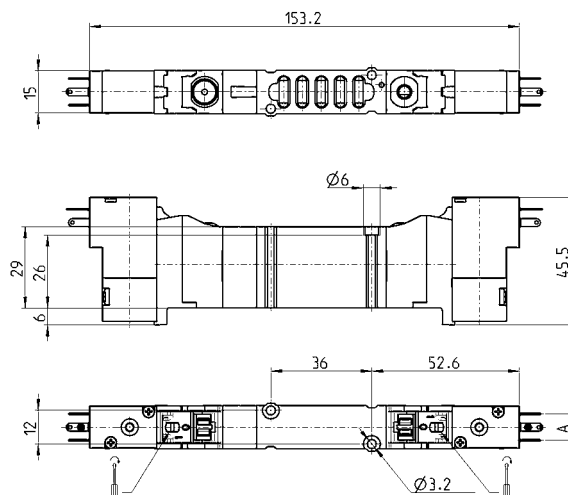
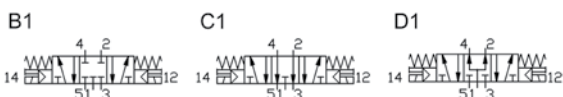
Electro-pneum. valve, pilot sup. sol. P / W, outlets on base - s. 16

New

5/3 way
 CC = Centres Closed
 CO = Centres Open
 CP = Centres in Pressure



Connectors: see pages
 2/2.2.07.38-39.



Mod.	A	Pilot supply pressure (bar)	Operating pressure (bar)	Flow (NI/min)	Symbol
EN630-E11-P..	9,4	3 ÷ 10	-0,9 ÷ 10	610	G7
EN730-E11-P..	9,4	3 ÷ 10	-0,9 ÷ 10	610	H7
EN830-E11-P..	9,4	3 ÷ 10	-0,9 ÷ 10	610	I7
EN630-E11-W..	8	3 ÷ 10	-0,9 ÷ 10	610	G7
EN730-E11-W..	8	3 ÷ 10	-0,9 ÷ 10	610	H7
EN830-E11-W..	8	3 ÷ 10	-0,9 ÷ 10	610	I7

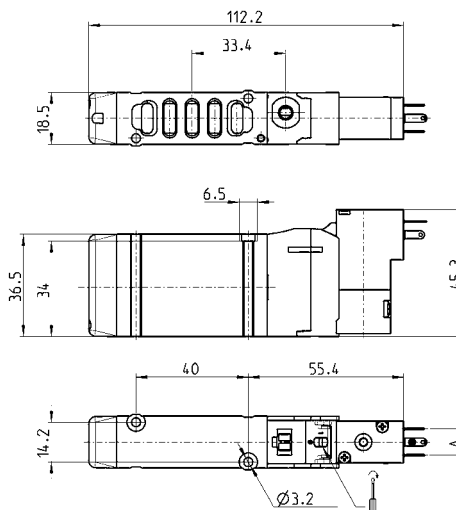
Electro-pn. mono. valve, pilot sup. sol. P / W, outlets on base - s. 19

New

5/2 way



Connectors: see pages
 2/2.2.07.38-39.

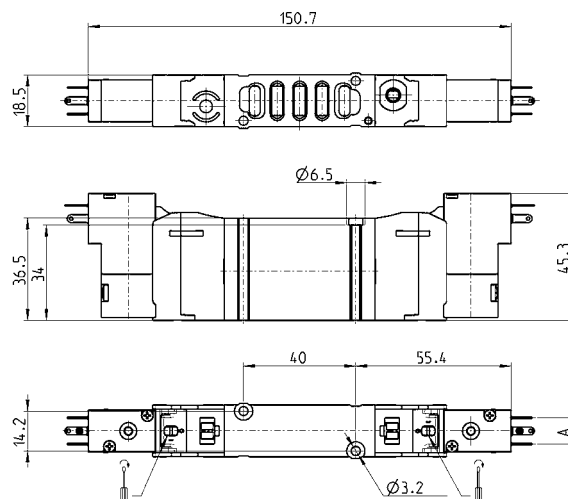
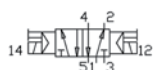


Mod.	A	Pilot supply pressure (bar)	Operating pressure (bar)	Flow (NI/min)
EN550-E16-P..	9,4	2,5 ÷ 10	-0,9 ÷ 10	1000
EN550-E16-W..	8	2,5 ÷ 10	-0,9 ÷ 10	1000

Electro-pn. bistab. valve, pilot sup. sol. P / W, outlets on base - s. 19

New

5/2 way

Connectors: see pages
2/2.2.07.38-39.

Mod.	A	Pilot supply pressure (bar)	Operating pressure (bar)	Flow (NI/min)
EN550-E11-P..	9,4	2 ÷ 10	-0,9 ÷ 10	1000
EN550-E11-W..	8	2 ÷ 10	-0,9 ÷ 10	1000

Electro-pneum. valve, pilot sup. sol. P / W, outlets on base - s. 19

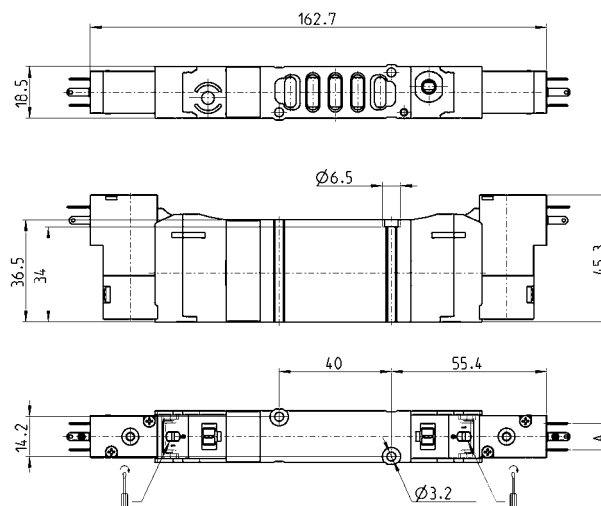
New

5/3 way

CC = Centres Closed

CO = Centres Open

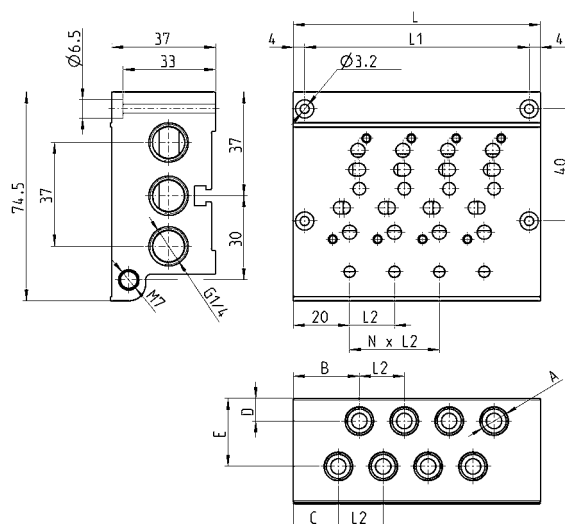
CP = Centres in Pressure

Connectors: see pages
2/2.2.07.38-39.

Mod.	A	Pilot supply pressure (bar)	Operating pressure (bar)	Flow (NI/min)	Symbol
EN650-E11-P..	9,4	3 ÷ 10	-0,9 ÷ 10	1000	G7
EN750-E11-P..	9,4	3 ÷ 10	-0,9 ÷ 10	1000	H7
EN850-E11-P..	9,4	3 ÷ 10	-0,9 ÷ 10	1000	I7
EN650-E11-W..	8	3 ÷ 10	-0,9 ÷ 10	1000	G7
EN750-E11-W..	8	3 ÷ 10	-0,9 ÷ 10	1000	H7
EN850-E11-W..	8	3 ÷ 10	-0,9 ÷ 10	1000	I7

Sub-base for valves size 16 and 19

New



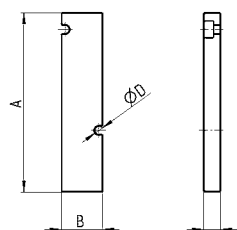
Mod.	N° of valve positions	A	B	C	D	E	L	L1	L2
EN530-2104	4	G1/8	23,5	16	8	24,2	88	80	16
EN530-2106	6	G1/8	23,5	16	8	24,2	120	112	16
EN530-2108	8	G1/8	23,5	16	8	24,2	152	144	16
EN550-2104	4	G1/4	23	15,5	8,8	26,5	97	89	19
EN550-2106	6	G1/4	23	15,5	8,8	26,5	135	127	19
EN550-2108	8	G1/4	23	15,5	8,8	26,5	173	165	19

Blanking plate for manifolds - base mounted valves

New

The following is supplied:

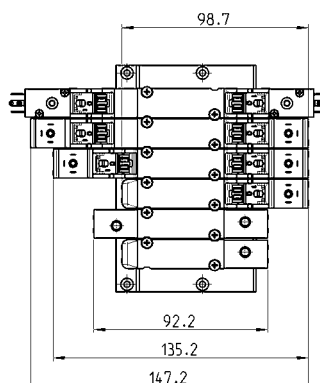
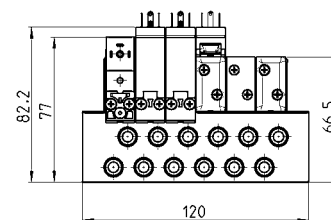
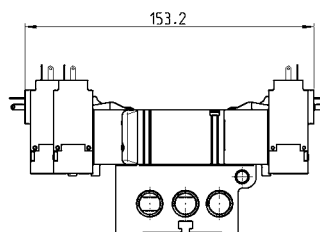
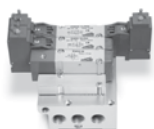
- 1x blanking plate
- 2x screws
- 1x seal



Mod.	Size	A	B	C	ØD
TP-EN530	16	64	14,7	6	3,2
TP-EN550	19	64	17	6	3,2

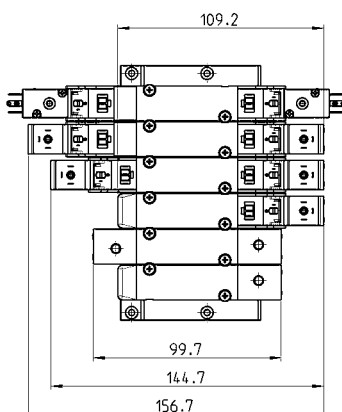
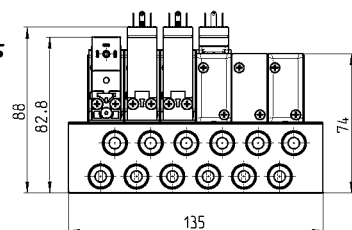
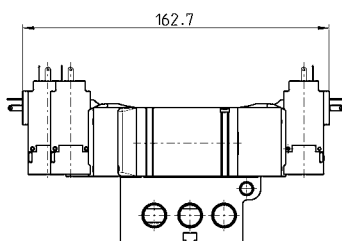
Manifolds complete with base mounted valves - size 16

New



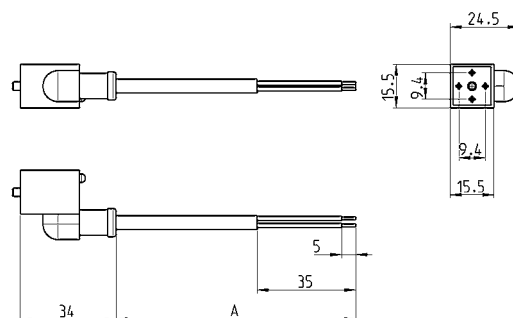
Manifolds complete with base mounted valves - size 19

New



Connectors 24DC PN with led for solenoid type P and PN

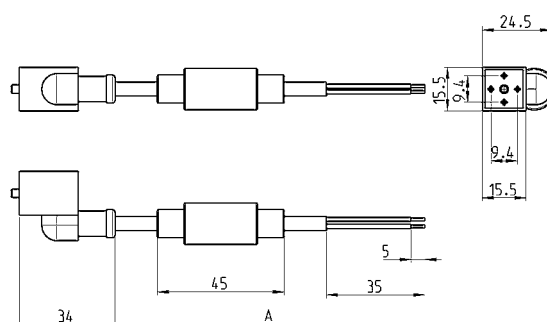
New



Mod.	A
125-503-2	2 m
125-503-5	5 m

Conn. V-AC PN with led and bridge rectifier for solenoid P and PN

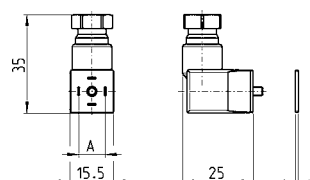
New



Mod.	A
125-903-2	cable 2 mt
125-903-5	cable 5 mt

Connectors DIN 43650

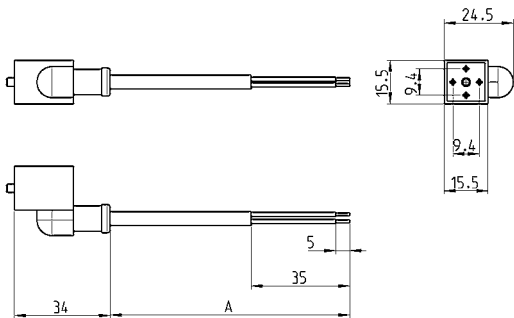
New



Mod.	Solenoid type	A
125-800	P	9,4
126-800	W	8

New

In-line connectors with cable



Mod.	A
125-553-2	2 m
125-553-5	5 m

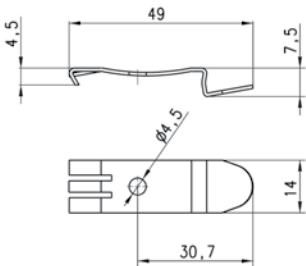
New

Mounting brackets



DIN EN 50022 (mm 7,5 x 35 - width 1)
Suitable for all manifolds.

The following is supplied:
2x plates
2x screws
2x nuts



PCF-EN531