

Basic ejectors Series VEBL

New

Basic ejectors in technopolymer without moving parts, based on the Venturi principle.

Different sizes available, with internal nozzle from 0,5 to 2,5 mm and with suction rate from 8 to 207 l/min.



- » No moving parts for long life and low maintenance
- » Reduced weight
- » Rapid generation of vacuum
- » Easy installation, on proper support too
- » Optimized dimensions

5

Basic ejectors Series VEBL are universal type ejectors made in technopolymer suitable for most industrial applications such as:

- Industrial robotics in most sectors
- Wood industry
- Packaging industry
- Food industry

GENERAL DATA

Description	Basic ejector
Materials	<ul style="list-style-type: none"> - body in technopolymer - silencier in technopolymer - internal nozzle in brass

CODING EXAMPLE

VE	BL	-	10H	-	T2
----	----	---	-----	---	----

VE SERIES:
VE = Vacuum ejector

BL VERSION:
BL = basic light

10H NOZZLE DIAMETER:
05H = 0,5 mm
07H = 0,7 mm
10H = 1 mm
15H = 1,5 mm
20H = 2 mm
25H = 2,5 mm

T2 TYPE OF CONNECTION (ON SUPPLY SIDE):
T1 = plier - tube Ø4
T2 = plier - tube Ø6
T3 = plier - tube Ø8

5

VACUUM

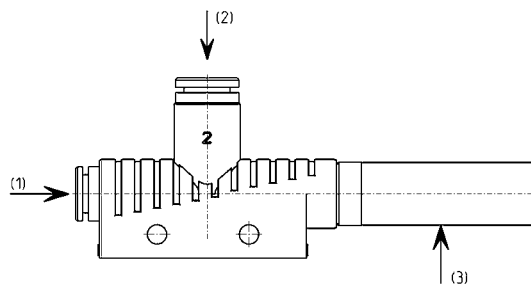
TECHNICAL DATA

- 1 = Compressed air inlet
2 = Vacuum inlet
3 = Exhaust



Usable fluids:
compressed air, oiled
and not, according to ISO
8573-1:2001 class 7-4-4

New

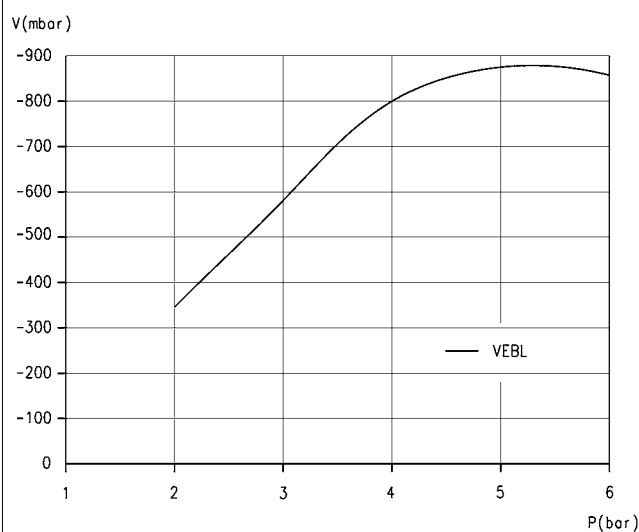


TECHNICAL DATA

Mod.	Ø nozzle (mm)	Obtainable relative pressure (mbar)	Vacuum flow (l/min)	Air consumption (l/min)	Operating pressure (bar)	Optimum operating pressure (bar)	Operating temperature (bar)	Weight (kg)	Noise level gripped [dB(A)]	Noise level free [dB(A)]	Suggested internal Ø for tubes [mm] up to 2m	Max n° of ejectors for one support
VEBL-05H-T1	0,5	-840	8	13,5	3...6	4,5	0...60	0,0075	53	58	2/2	11
VEBL-07H-T1	0,7	-850	16	22	3...6	4,5	0...60	0,0075	59	65	2/2	11
VEBL-10H-T2	1	-850	38	48	3...6	4,5	0...60	0,022	59	65	4/6	7
VEBL-15H-T2	1,5	-850	71	105	3...6	4,5	0...60	0,022	65	72	4/6	7
VEBL-20H-T3	2	-850	127	197	3...6	4,5	0...60	0,050	68	77	6/8	5
VEBL-25H-T3	2,5	-850	215	311	3...6	4,5	0...60	0,050	70	78	6/8	5

Diagrams VEBL

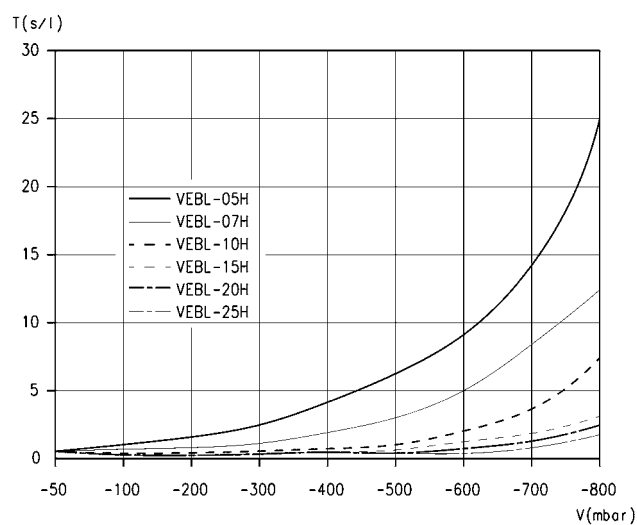
New



LEGEND:

V = Vacuum values
P = Working pressure

Note: vacuum reachable with different supply pressures



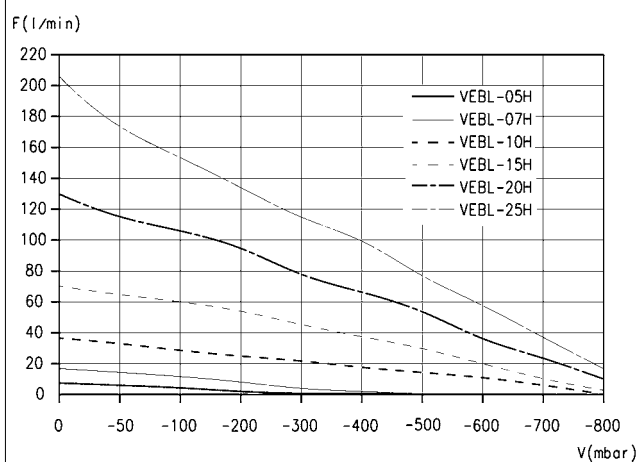
LEGEND:

T = Evacuation time
V = Vacuum values

Note: evacuation time for different vacuum values

Diagrams VEBL

New



LEGEND:

F = Suction rate
V = Vacuum values

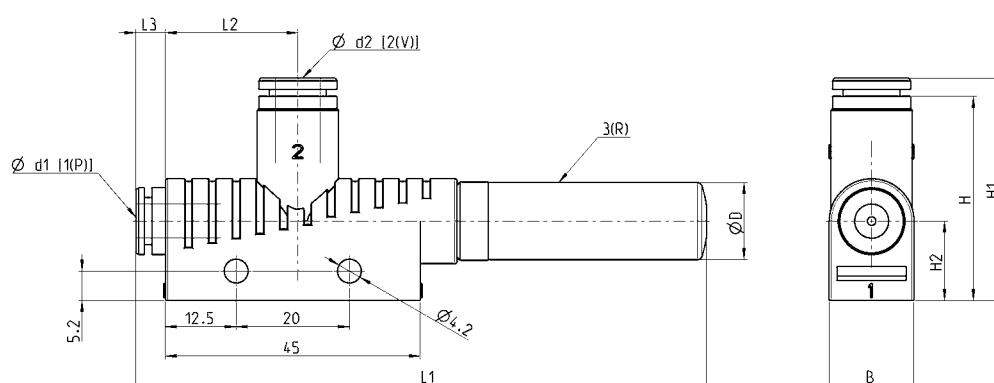
Note: Suction rate with different vacuum values

Ejectors VEBL-05H...25H

New



[P] = Pressure
 [V] = Vacuum
 [R] = Exhaust

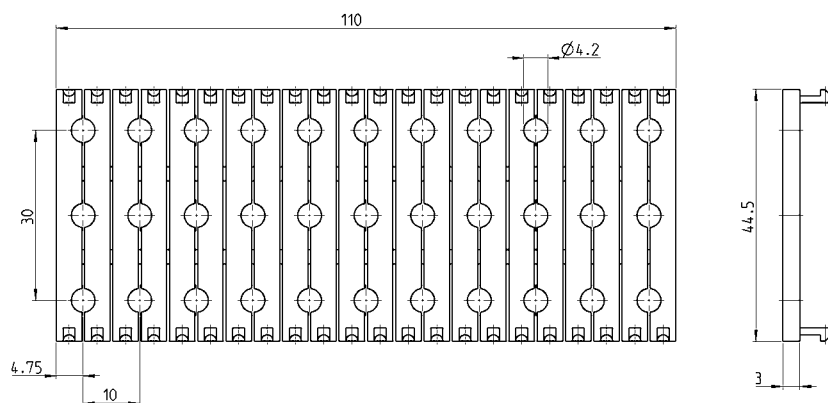


DIMENSIONS

Mod.	B	d1	d2	D	H	H1	H2	L1	L2	L3
VEBL-05H-T1	10	4	4	9	26	28	12	71	18	2
VEBL-07H-T1	10	4	4	9	26	28	12	71	18	2
VEBL-10H-T2	15	6	8	14	34	40	14	97	22	5,5
VEBL-15H-T2	15	6	8	14	34	40	14	97	22	5,5
VEBL-20H-T3	20	8	10	20	39	45,5	17	168	24,5	5,5
VEBL-25H-T3	20	8	10	20	39	45,5	17	168	24,5	5,5

Accessories VEBL-ST

New

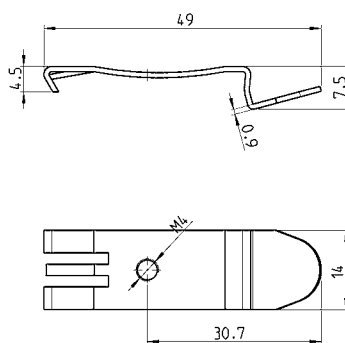


Mod.

VEBL-ST

Accessories VEBL-PCF

New



Mod.

VEBL-PCF