

Series N filters and coalescing filters

Ports G1/8, G1/4
with screw-on transparent bowl



Series N filters are available with G1/8 and G1/4 gas ports.

The transparent bowl makes the monitoring of the condensate levels very easy and is equipped with manual and semiautomatic drain.

The models are available with 3 different filtering elements: 25µm, 5µm and 0,01µm.

3

TREATMENT

GENERAL DATA

Construction	HDPE filtering element
Materials	brass, grillamid, NBR
Ports	G1/8 - G1/4
Max. condensate capacity	size 1 = 11 cm ³ - size 2 = 28 cm ³
Weight	Kg 0.220
Mounting	vertical, inline
Operating temperature	-5°C ÷ 50°C at 10 bar (with the dew point of the fluid lower than 2°C at the min. working temperature)
Porosity of filtering element	25 µm (standard); 5 µm (on request); 0,01 µm
Draining of condensate	semiautomatic, manual
Operating pressure	0,3 ÷ 16 bar (with depressurisation max 10 bar)
Nominal flow	see graphs

CODING EXAMPLE

N	2	04	-	F	0	0
----------	----------	-----------	----------	----------	----------	----------

N	SERIES
2	SIZE: 1 = small bowl 2 = normal bowl
04	PORTS: 08 = G1/8 04 = G1/4
F	F = FILTER
0	FILTERING ELEMENT: 0 = 25µm (standard) 1 = 5µm B = 0.01µm
0	DRAINING OF CONDENSATE: 0 = manual - semiautomatic drain 4 = depressurisation - only normal bowl (2) 5 = depressurisation, protected - only normal bowl (2) 8 = no drain, port G1/8

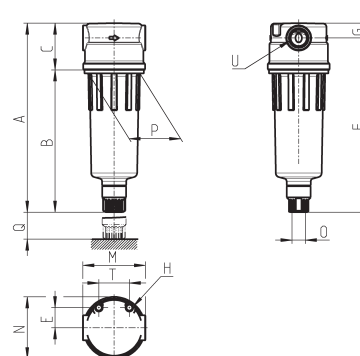
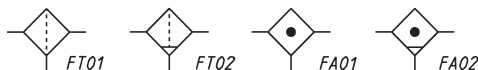
3

TREATMENT

Filters Series N



FT01 = filter without drain with threaded port
 FT02 = filter with semiautomatic manual drain
 FA01 = coalescing filter without drain with threaded port
 FA02 = coalescing filter with semi-automatic manual drain



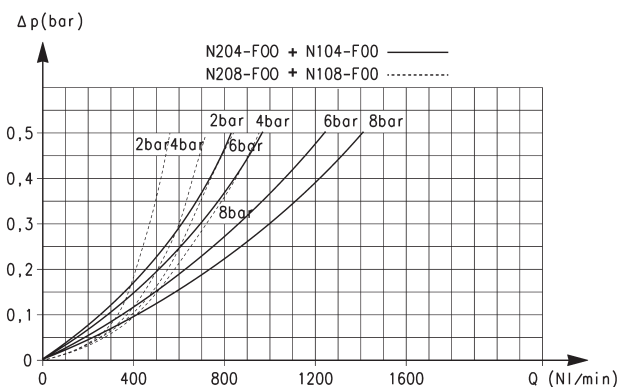
DIMENSIONS

Mod.	A	B	C	E	F	G	H	M	N	O	P	Q	T	U
N108-F00	111	78	33	14,5	101	10	M5	45	44,5	G1/8	38	40	22	G1/8
N104-F00	111	78	33	14,5	101	10	M5	45	44,5	G1/8	38	40	22	G1/4
N208-F00	135	102	33	14,5	125	10	M5	45	44,5	G1/8	38	40	22	G1/8
N204-F00	135	102	33	14,5	125	10	M5	45	44,5	G1/8	38	40	22	G1/4

3/4.05.02

Products designed for industrial applications.
 General terms and conditions for sale are available on www.camozzi.com.

FLOW DIAGRAMS



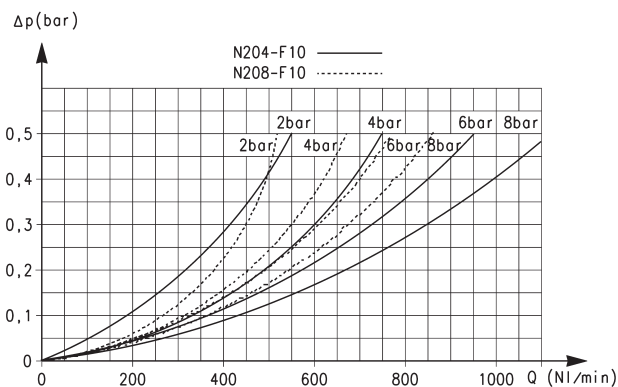
Flow diagram for models:

N204-F00 - N104-F00 = _____

N208-F00 - N108-F00 = - - - - -

 ΔP = Pressure drop

Q = Flow



Flow diagram for models:

N204-F10 = _____

N208-F10 = - - - - -

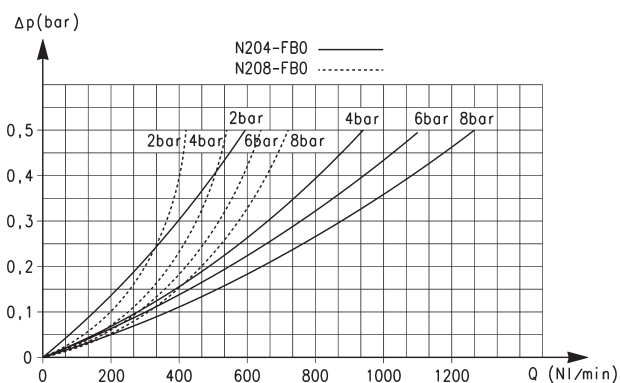
 ΔP = Pressure drop

Q = Flow

3

TREATMENT

FLOW DIAGRAMS



Flow diagram for models:

N204-FB0 = _____

N208-FB0 = - - - - -

 ΔP = Pressure drop

Q = Flow

Series N pressure regulators

Ports G1/8, G1/4



Series N pressure regulators are available with G1/4 and G1/8 ports. Their design incorporates a self relieving diaphragm so as to allow decremental adjustments.

GENERAL DATA

Construction	diaphragm type
Materials	brass, technopolymer, NBR
Ports	G1/8 - G1/4
Weight	Kg 0.316
Pressure gauge ports	G1/8
Mounting	in - line or console (in any position)
Operating temperature	-5°C ÷ 50°C (with the dew point of the fluid lower than 2°C at the min. working temperature)
Inlet pressure	0 ÷ 16 bar
Outlet pressure	0.5 ÷ 10 bar
Nominal flow	see graphs
Secondary pressure relieving	standard

CODING EXAMPLE

N	12	04	-	R	0	0
---	----	----	---	---	---	---

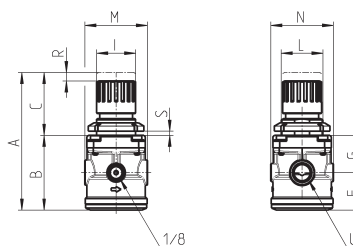
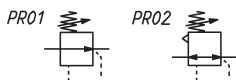
N	SERIES
12	SIZE: 12
04	PORTS: 08 = G1/8 04 = G1/4
R	R = REGULATOR
0	OPERATING PRESSURE: 0 = 0,5 ÷ 10 (standard) 1 = 0 ÷ 4 2 = 0 ÷ 2 7 = 0,5 ÷ 7
0	DESIGN TYPE: 0 = self-relieving 1 = non-relieving

Pressure regulators Series N

Calibrated or blocked regulators on request



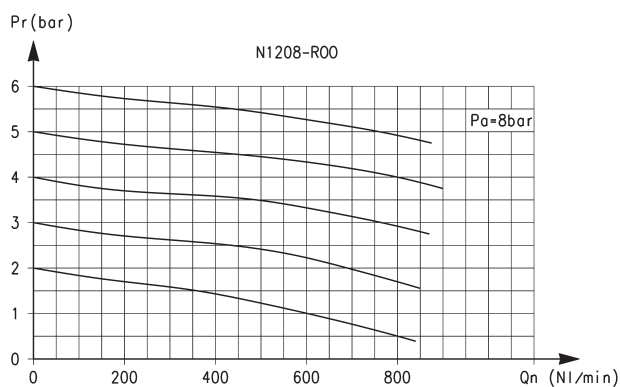
PR01 = regulator without relieving
PR02 = regulator with relieving



DIMENSIONS

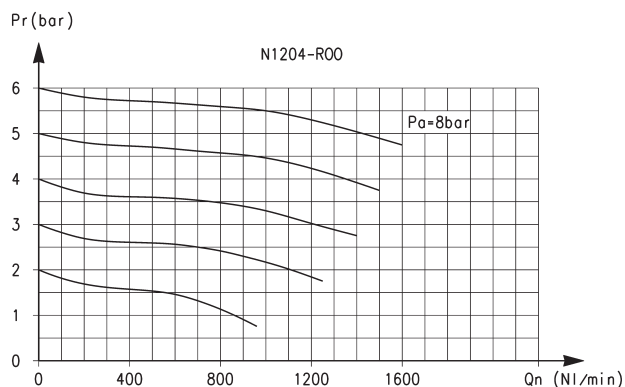
Mod.	A	B	C	F	G	I	L	M	N	R	S	U
N1208-R00	92	53	39	26	27	28	30X1,5	45	45	3	0+6	G1/8
N1204-R00	92	53	39	26	27	28	30X1,5	45	45	3	0+6	G1/4

FLOW DIAGRAMS



Flow diagram for model: N1208-R00

Pa = Inlet pressure
Pr = Regulated pressure
Qn = Flow



Flow diagram for model: N1204-R00

Pa = Inlet pressure
Pr = Regulated pressure
Qn = Flow

Series N lubricators

Ports G1/8, G1/4
with screw-on transparent bowl



Series N lubricators are available with G1/4 and G1/8 ports.

The special type of design allows a vast range of applications in relation to the amount of atomized oil and the air consumed.

The body of the lubricator is made of brass, while the bowl is transparent.

3

TREATMENT

GENERAL DATA

Construction	compensation valve
Materials	brass, technopolymer, NBR
Ports	G1/8 - G1/4
Oil capacity cm ³	size 1: 26 cm ³ size 2: 37 cm ³
Weight	kg 0,240
Mounting	vertical, inline
Operating temperature	-5°C ÷ 50°C at 10 bar (with the dew point of the fluid lower than 2°C at the min. working temperature)
Oil refilling	without pressure
Oil for lubricator	from 3°E ÷ 10°E (ask our engineers for types available)
Operating pressure	1 ÷ 16 bar
Nominal flow	see graph
Min. air consumpt. for lubricat.	at 1 bar = 7,5 NI/min at 6 bar = 11 NI/min

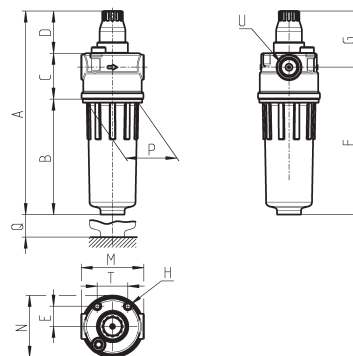
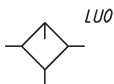
CODING EXAMPLE

N	2	04	-	L	00
N	SERIES				
2	SIZE: 1 = small bowl 2 = normal bowl				
04	PORTS: 08 = G1/8 04 = G1/4				
L	L = LUBRICATOR				
00	DESIGN TYPE: 00 = atomized oil				

3

TREATMENT

Lubricators Series N

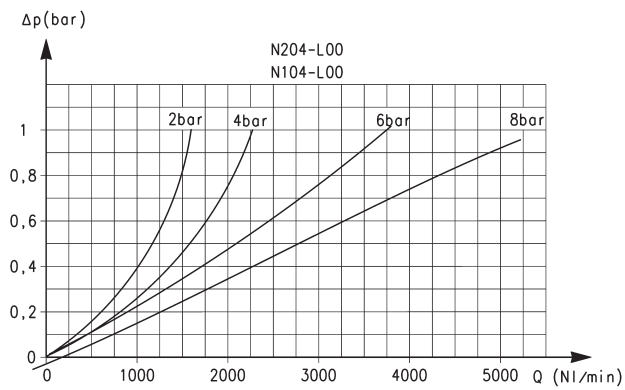


DIMENSIONS

Mod.	A	B	C	D	E	F	G	H	M	N	P	Q	T	U
N108-L00	122,5	59	33	30,5	75,5	82	40,5	M5	45	44,5	38	46,5	22	G1/8
N104-L00	122,5	59	33	30,5	75,5	82	40,5	M5	45	44,5	38	46,5	22	G1/4
N208-L00	146,5	83	33	30,5	14,5	106	40,5	M5	45	44,5	38	46,5	22	G1/8
N204-L00	146,5	83	33	30,5	14,5	106	40,5	M5	45	44,5	38	46,5	22	G1/4

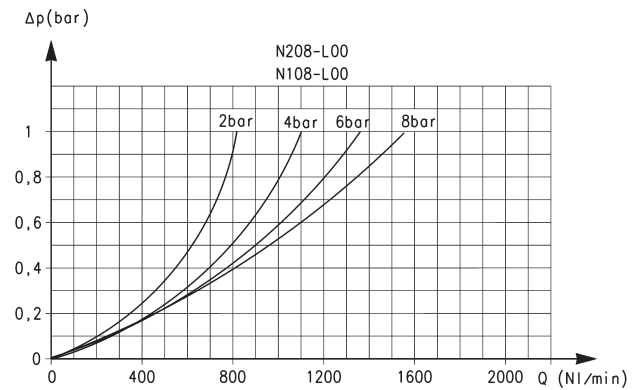
3/4.15.02

FLOW DIAGRAMS



Flow diagrams for models: N204-L00 and N104-L00

ΔP = Pressure drop
 Q = Flow



Flow diagrams for models: N208-L00 and N108-L00

ΔP = Pressure drop
 Q = Flow

Series N filter-regulators

Ports G1/8, G1/4
with screw-on transparent bowl



Series N filter-regulator is available with G1/4 and G1/8 ports. Its design incorporates a self relieving diaphragm. The transparent filter bowl allows an easy monitoring of the condensate levels. The manual and semi-automatic drain makes both the manual and automatic condensate exhaust easier when there is no pressure.

GENERAL DATA

Construction	HDPE filtering element
Materials	brass body and poppet - stainless steel spring - NBR O-ring - HDPE filtering element - Grilamid bowl - others: PA The version with brass bowl is available on request.
Ports	G1/8 - G1/4
Max. condensate capacity	size 1 = 11cm ³ size 2 = 28 cm ³
Weight	Kg 0,370
Pressure gauge ports	G1/8
Mounting	vertical, in- line
Operating temperature	-5°C + 50°C a 10 bar (with the dew point of the fluid lower than 2°C at the min. working temperature)
Porosity of filtering element	25 µm (standard) 5 µm (on request)
Draining of condensate	standard semi-automatic, manual
Inlet pressure	0 + 16 bar
Outlet pressure	0,5 + 10 bar
Nominal flow	see graph
Secondary pressure relieving	standard

CODING EXAMPLE

N	2	04	-	D	0	0	-	4
---	---	----	---	---	---	---	---	---

N	SERIES
2	SIZE: 1 = small bowl 2 = normal bowl
04	PORTS: 08 = G1/8 04 = G1/4
D	D = FILTER-REGULATOR
0	FILTERING ELEMENT: 0 = 25µm (standard) 1 = 5µm
0	DRAINING OF CONDENSATE AND DESIGN TYPE: 0 = manual - semiautomatic, self-relieving draining of condensate 1 = manual - semiautomatic, non-relieving draining of condensate 4 = depressurised draining of condensate, self-relieving (with normal bowl only) 5 = depressurised, protected draining of condensate, self-relieving (with normal bowl only) 8 = no drain, with port 1/8, self-relieving
4	OPERATING PRESSURE: = 0,5 ÷ 10 bar (standard) 2 = 0 ÷ 2 bar 4 = 0 ÷ 4 bar 7 = 0,5 ÷ 7 bar

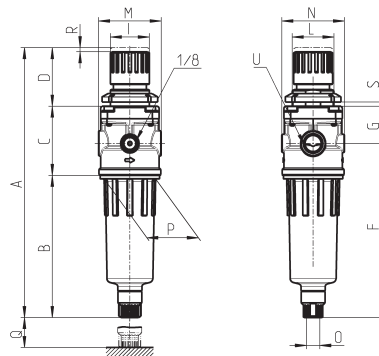
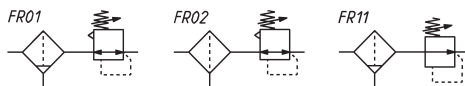
3

TREATMENT

Series N filter-regulators

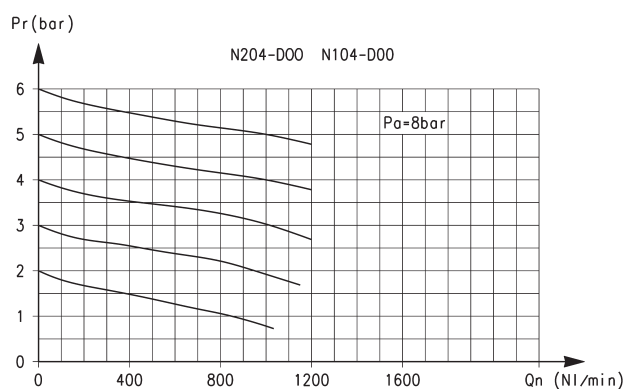


FR01 = filter-regulator with relieving and manual drain
FR02 = FR with relieving and without drain
FR11 = FR with manual drain and without relieving



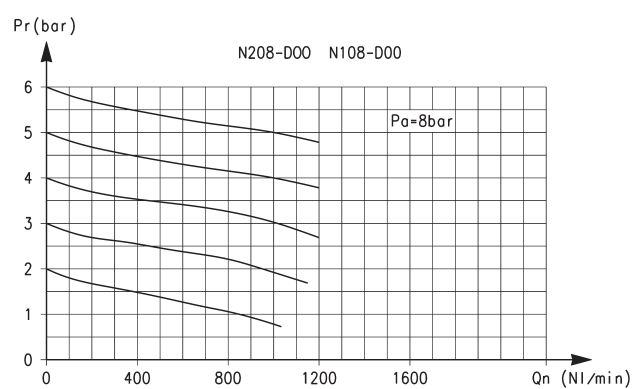
Mod.	A	B	C	D	F	G	I	L	M	N	O	P	Q	R	S	U
N108-D00	167	78	50	39	101	27	28	M30x1,5	45	45	G1/8	38	40	3	0 ÷ 6	G1/8
N104-D00	167	78	50	39	101	27	28	M30x1,5	45	45	G1/8	38	40	3	0 ÷ 6	G1/4
N208-D00	191	102	50	39	125	27	28	M30x1,5	45	45	G1/8	38	40	3	0 ÷ 6	G1/8
N204-D00	191	102	50	39	125	27	28	M30x1,5	45	45	G1/8	38	40	3	0 ÷ 6	G1/4

FLOW DIAGRAM



Flow diagrams for models: N204-D00 - N104-D00

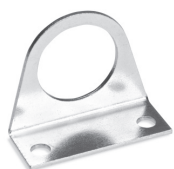
Pa = Inlet pressure
Pr = Regulated pressure
Qn = Flow



Flow diagrams for models: N208-D00 - N108-D00

Pa = Inlet pressure
Pr = Regulated pressure
Qn = Flow

ACCESSORIES FOR SERIES N



Mounting bracket
Mod. C114-ST



Mounting bracket
Mod. C114-ST/1



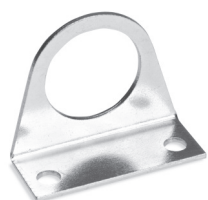
Mounting bracket
Mod. C114-ST/2



Mounting bracket
Mod. N204-ST



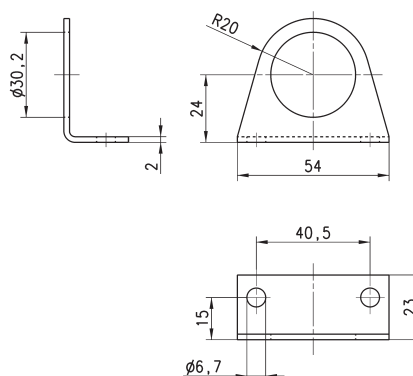
Systems of rapid connections designed to make mounting easier.



Mounting bracket Mod. C114-ST

For regulators and filter-regulators (G1/4 - G1/8)

The kit is supplied with:
1x zinc-plated steel bracket.



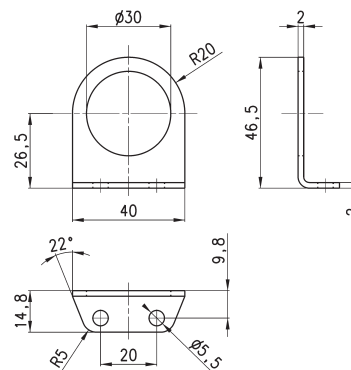
Mod.
C114-ST



Mounting bracket Mod. C114-ST/1

For regulators and filter-regulators (G1/4 - G1/8)

The kit is supplied with 1 zinc-plated steel bracket.



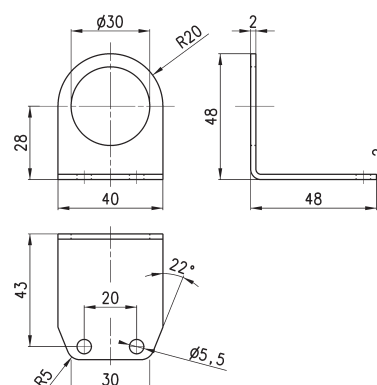
Mod.
C114-ST/1



Mounting bracket Mod. C114-ST/2

For regulators and filter-regulators
(G1/4 - G1/8)

The kit is supplied with 1 zinc-plated steel bracket.



Mod.
C114-ST/2

Mounting bracket Mod. N204-ST

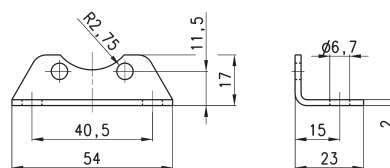
For filters and lubricators

The kit is supplied with:

1 bracket

2 screws M5X6

Materials: zinc-plated steel bracket and screws.



Mod.

N204-ST