

Operating Data

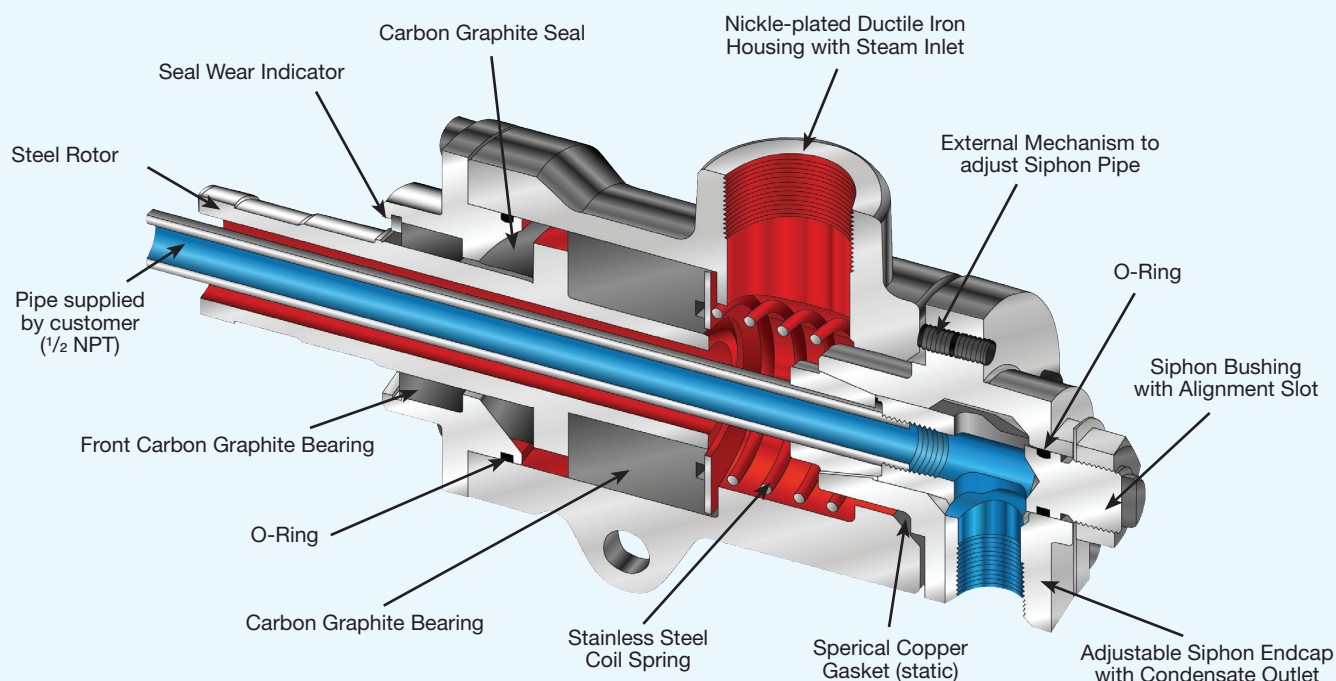
| | | |
|-------------------------------|---------|-----------------------|
| Max. Saturated Steam Pressure | 250 PSI | 17 bar |
| Max. Temperature | 400 °F | 200 °C |
| Max. Speed | 400 RPM | 400 min ⁻¹ |

DEUBLIN

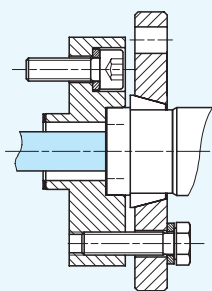
Rotating Union HPS Series for Steam Service in Corrugators, DN 40

- monoflow and duoflow design
- self-supported rotating union
- seals and outboard bearing made of impregnated Carbon Graphite
- convex seal ring reduces compression on Carbon ring; better suited to handle mechanical and thermal shock
- external mechanism to adjust siphon pipe through end cap
- nickel plated front and rear end cap
- nickel-plated ductile iron housing
- stainless steel spring
- heavy duty steel rotor design

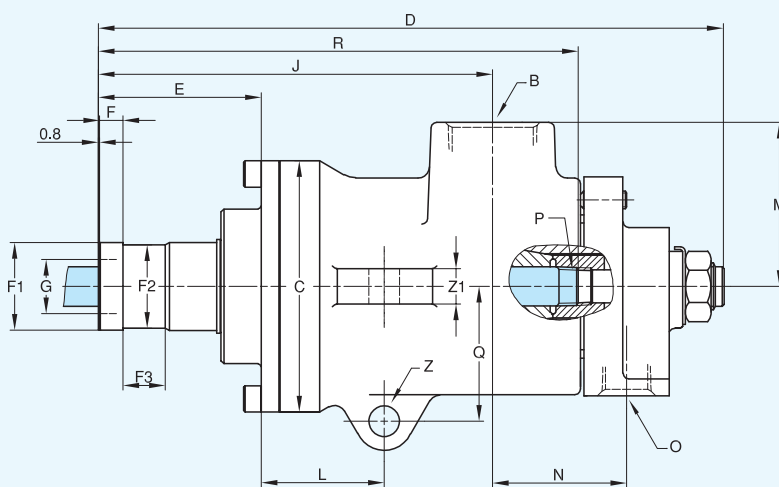
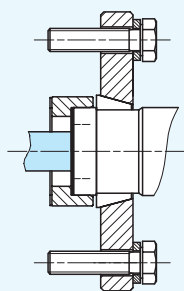
For further information please contact **DEUBLIN** or your local representative.



Flange adapter DN 32



DN 50



| DN | B | O | Ordering No. | C Ø | D | E | F | F1 Ø | F2 Ø | F3 | G Ø | J | L | M | N | P | Q | R | Z Ø | Z1 |
|----|----------|--------|----------------|--------|-----|----|------|----------------|----------------|----|--------|-----|----|----|----|---------|----|-----|--------|----|
| 40 | Rc 1 1/2 | Rc 3/4 | C15D-005-02-3A | 136 | 340 | 88 | 12,7 | 47,50 47,45 | 45,19 45,11 | 23 | 33,4 | 215 | 69 | 90 | 73 | 1/2 NPT | 73 | 258 | 16,7 | 21 |