

WOS SERIES

WATER - OIL SEPARATORS

inlet connection

ø10

temperature oper. range

1,5 to 45°C

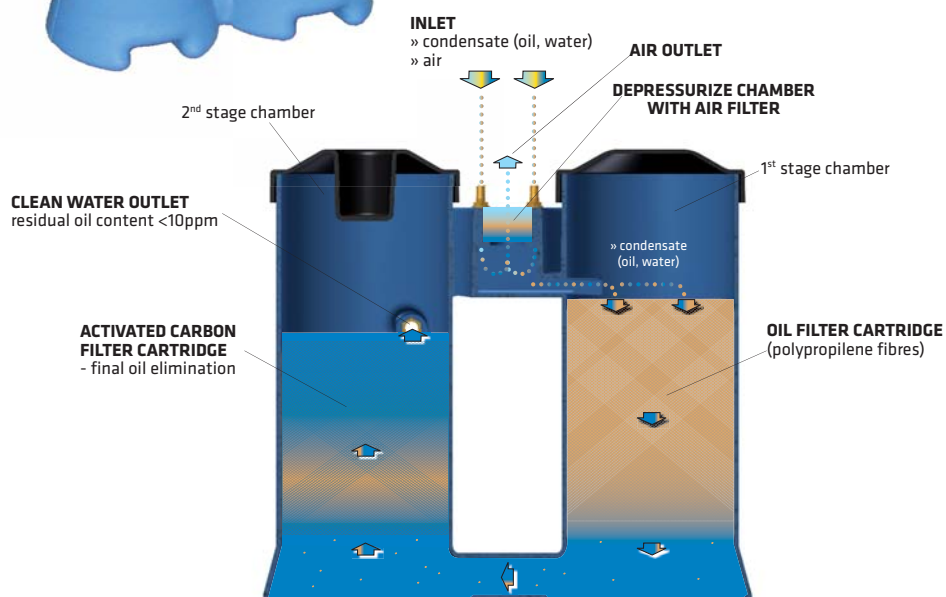


APPLICATIONS

- compressed air systems

ADVANTAGES

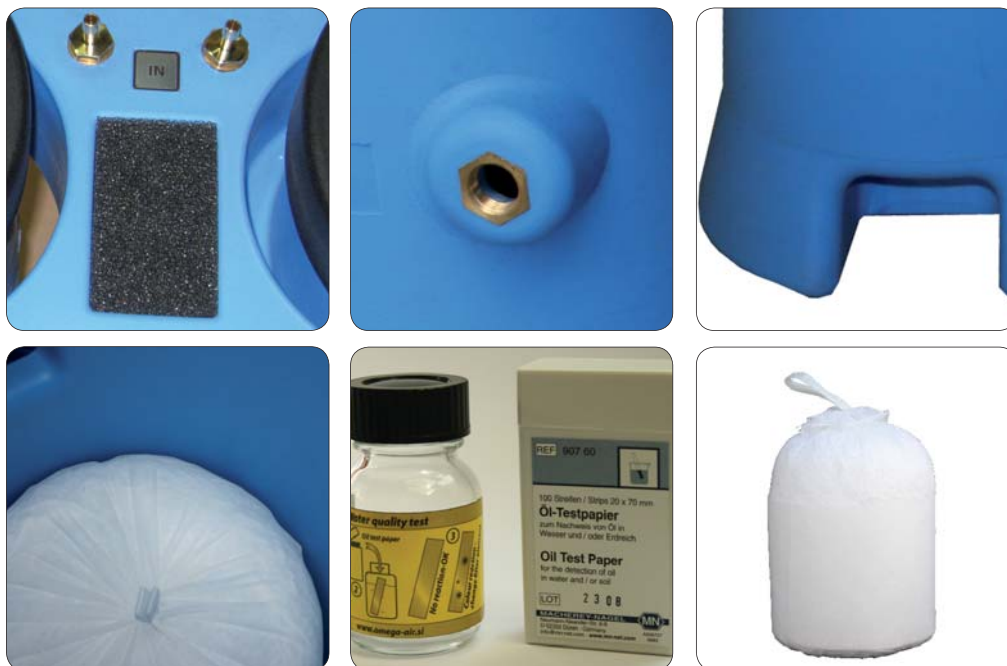
- ✓ No complex sizing required.
- ✓ Simple to install.
- ✓ Works with any type of condensate drain.
- ✓ Can handle and separate any type of oil.
- ✓ Oil residue value is less than 10 ppm.
- ✓ Easy to maintain.
- ✓ No condensate settling tank is required (therefore there is no bacteria build-up).
- ✓ Small compact design.
- ✓ Test valve and test set included for sampling purposes.



DESCRIPTION

WOS water oil separators have been developed to separate lubricant oil from condensate from compressed air⁽¹⁾ systems.

WOS water-oil separator can be used in variety of applications. For applications not listed please contact producer or your local distributor.



Water quality test

Water quality test should be performed at least once per month, to control the contamination level of disposed condensate.

If oil concentration is reached, oil filter cartridges must be changed.

WOS - TECHNICAL DATA

Operating temperature		1,5 - 45°C (max 65°C) ⁽³⁾ ; 35 - 113°F (max. 149°F) ⁽³⁾					
Operating media		Condensate (air, water, oil); Non agresive; Not suitable for emulsion					
Residual oil content		< 10ppm					
Service interval		When first of following parametres appears:					
		- 4000 operating hours of compressor ⁽⁴⁾					
		- 12 months regardless of compressor operating hours					
		- outlet oil concentration reaches concentration determined with local directives					
Technical data		Cold climate zone 15°C 60%RH	Mild climate zone 25°C 60%RH	Hot climate zone 40°C 100%RH	Dimensions [mm]		
					A	B	C
WOS-4	Max oil adsorption [g]	2,89	2,43	1,23	416	243	411
	Max FAD [Nm ³ /min]/[scfm]	4,82/170	4,04/142	2,05/72,3			
	Max condensate flow [l/h]	2,3	3,4	6,3			
WOS-8	Max oil adsorption [g]	6,01	5,04	2,55	730	343	680
	Max FAD [Nm ³ /min]/[scfm]	10,0/353	8,4/296	4,25/150			
	Max condensate flow [l/h]	4,7	7,1	13,1			
WOS-20	Max oil adsorption [g]	14,64	12,28	6,22	820	366	940
	Max FAD [Nm ³ /min]/[scfm]	24,4/861	20,5/723	10,37/366			
	Max condensate flow [l/h]	11,4	17,2	32,0			
WOS-35	Max oil adsorption [g]	25,4	21,31	10,79	960	386	1137
	Max FAD [Nm ³ /min]/[scfm]	42,3/1495	35,5/1254	17,99/635			
	Max condensate flow [l/h]	19,8	29,8	55,6			



⁽³⁾ Max. operating temperature is 65°C, but when temperature is over 45°C, performance may decrease.

⁽⁴⁾ At compressor oil carryover 2,5mg/m³. Lower/higher oil carry over means proportionally longer/shorter lifetime (e.g. if oil carryover is 5mg/m³ lifetime reduces to 2000 operating hours).